



PANSTAR

PANSTAR ENTERPRISE

PANSTARLINE.COM

PANSTAR TECHSOLUTION

PANSTAR TREE

PANSTAR BNGD

SANSTAR LINE

SP TRADING



We think first before our customers do
We act first before our customers do

Amongst numerous words and phrases describing PanStar, “for the first time ever in Korea” would be most often found. For the first time ever in Korea, PanStar launched the cruise Business combining the ferry and cruise services offering various entertainment and activities on board. For the first time ever in Korea, PanStar obtained a license of customs clearance in Japan in order to provide high-quality logistics service to our customers. Also, For the first time ever in Korea, PanStar started its business of transporting cargoes in Japan through the Japan Railways(JR).

Although paving a new path is a difficult and challenging task, we will not hesitate for there are corresponding opportunities and achievements available.

A Company where people with more expectations in tomorrow than today are gathered together to work with passionate hearts, this is PanStar.

PANSTAR GROUP

PANSTAR OVERVIEW

- 03 — Group Business
- 04 — CEO Message
- 05 — History & Awards

PANSTAR SERVICE

- 07 — PanStar Express Cargo
 - > P.K.L.B
 - > T.S.P.S
 - > P.U.E
- 12 — PanStar International Express
- 13 — PanStar Cruise
 - > Osaka Cruise Ferry
 - > Busan One Night Cruise

SUBSIDIARY COMPANY

- 19 — PanStarEnterprise
- 23 — PanStarTechSolution
- 25 — PanStarTree
- 27 — PanStarBNGD
- 29 — SanStarLine
- 31 — PanStar Network

GROUP BUSINESS



PANSTAR

Overseas cargo transportation
International freight forwarding
Shipping agency

PANSTAR LINE.COM

Overseas passenger transportation
Cruise services
(Cruise passenger transportation)
International cargo forwarding

PANSTAR TREE

Ship Management
Construction

PANSTAR ENTERPRISE

Automobile maintenance equipment
Cruise services
Trading
Stevedoring services
International cargo/freight forwarding
International express transportation

PANSTAR TECHSOLUTION

EGCS retrofit engineering & BWMS

PANSTAR BNGD

General/Bonded Warehousing
International cargo forwarding
Weight verification



SANSTARLINE

Overseas cargo transportation
International freight forwarding
Shipping agency
Customs clearance services
Travel businesses
/Bus transportation services

SP TRADING

Trading
Distribution services
Container leasing services



CEO MESSAGE



PanStar – Creating and Sharing a Culture Filled with Smiles of Customers

PanStar considers the process as equally important as the result.

Is PanStar growing together with its customers and partners?
Is PanStar's profit leading to a national interest?
Is PanStar contributing to the development of local economy?

PanStar will be reinforcing such desirable corporate culture that considers both objective and process to be important.

PanStar is a corporation in which joyful and cheerful memories are instantly engraved in the hearts and minds of cargo owners and traveling customers.

PanStar CEO **Hyun Gyum, Kim**

HISTORY & AWARDS

1990

1990. 07
- Established PANSTAR ENTERPRISE CO., LTD.
1994. 12
- Established PANSTAR TREE CO., LTD.,
an inland freight transportation affiliate
1999. 01
- Established PANSTAR LINE.COM CO., LTD.,
an Overseas cargo transportation affiliate
- 08
- Established SANSTARLINE CO., LTD.,
a local entity in Japan

1999. 05
- SME Entrepreneur Award
: Representative Director

2000

2002. 02
- Introduced "PANSTAR DREAM" vessel
- 04
- Obtained a license international transportation between
Busan and Osaka : PANSTAR LINE.COM CO., LTD.
- 04
- Commenced PANSTAR DREAM service for a route to Osaka
2004. 12
- Commenced weekend one-night cruises from Busan
2006. 11
- Obtained a license for customs clearance for Osaka
: SANSTARLINE CO., LTD.
2007. 03
- Obtained a travel business license : SANSTARLINE CO., LTD.
- 04
- Introduced "PANSTAR SUNNY" vessel
- 04
- Commenced the Busan-Osaka daily service
- 05
- Commenced the P.U.E (PanStar Ultra Express) service
2008. 04
- Obtained a multimodal ferry business license
: PANSTAR LINE.COM CO., LTD.
- 04
- Commenced international and domestic cruises for
the first time in Korea
- 04
- Introduced "PANSTAR HONEY" vessel
- 06
- Obtained a local rail freight transportation permit
in Japan : SANSTARLINE CO., LTD.
- 12
- Obtained a local Tokyo customs clearance license
in Japan : SANSTARLINE CO., LTD.
2009. 01
- Commenced the Busan-Kobe route service
- 02
- Launched the "Air Cruise" product in partnership with
Air Busan : PANSTAR LINE.COM CO., LTD

2002. 02
- Trade Promotion Award : Representative Director
2005. 04
- Presidential Commendation : Representative Director
2006. 12
- "Person of the Year" in the Ferry Industry : Representative Director
2007. 12
- Management Innovative SME
2008. 07
- International Tourism Academic Conference Tourism Company
Management Grand Prize Award : Representative Director
- 11
- Korea Logistics Grand Prize Minister of Land, Transport and
Maritime Affairs Award : PANSTAR LINE.COM CO., LTD.
2009. 11
- Trade Day Minister of Knowledge Economy Award
: Representative Director
- 11
- 20 million dollars Export Tower Award
: PANSTAR LINE.COM CO., LTD.

2010

2010. 01
- Commenced the P.K.L.B (PanStar Korea Land
Bridge) service
- 07
- Commenced the Osaka and Tsuruga routes
services by SANSTAR DREAM
- 10
- The number of Busan-Osaka cruise passengers
exceeded 1 million
2011. 02
- Registered for the port transportation business
(general loading and unloading) : PANSTAR TREE CO., LTD.
- 06
- Trial cruise service in Hallyeohaesang National
Marine Park
- 12
- Established PanStar Busan Newport Global Distripark
2012. 06
- Commenced the Yeosu Expo one-night cruise service
- 08
- Introduced "STARLINK ONE" vessel
- 11
- Registered for the Ministry of Land, Transport
and Maritime Affairs ocean-going regular freight
transportation business : PANSTAR CO., LTD.
- 11
- Commenced the Tsuruga and Kanazawa routes
services by STARLINK ONE
2013. 01
- Commenced the Osaka route service by STARLINK ONE
- 08
- The number of Busan port one night cruise
passengers exceeded 100,000
- 09
- Commenced the Tokyo route express cargo ferry
service for the first time by Korean and Japanese
marine companies
- 12
- Opened PanStar Busan Newport Global Distripark
2014. 04
- Commenced the Osaka route service by STARLINK
- 08
- Obtained the Korean Register of Shipping "SMC
(Safety Management Certificate), DOC (Document
of Compliance)" : PANSTAR TREE CO., LTD.

2012. 03
- Model Taxpayer Commendation
: Representative Director

2015

2015. 01
- Commenced the Masan I-Port(Gapo Newport) Port operation &
Stevedoring services : PANSTAR TREE CO., LTD.
- 02
- Subscribed to the marine insurance of 1 billion dollars for PANSTAR DREAM
- 03
- Commenced the Masan I-Port route service by STARLINK ONE
- 03
- Obtained the first-class freight transportation service license : SANSTARLINE CO., LTD.
- 10
- Commenced the Yokohama route service by STARLINK HOPE
- 12
- Acquired Heshbon Co., Ltd. and changed the business name to
PANSTAR ENTERPRISE CO., LTD.
- 12
- Obtained the second-class international freight transportation service
license : SANSTARLINE CO., LTD.
2016. 01
- Obtained the freight forwarder AEO(Authorized Economic Operator)
certification : PANSTAR CO., LTD.
- 04
- Commenced the Korea Strait one-night cruise service
- 04
- Obtained the shipper AEO certification : PANSTAR LINE.COM CO., LTD.
- 07
- Obtained the bus business license : SANSTARLINE CO., LTD.
- 10
- Commenced the Shidao China route service by STARLINK ONE
- 10
- Commenced the T.S.P.S(Trilateral Sea-highway PanStar Service)
2017. 01
- Entered into the PSA Agreement for Costa Crociere, Italy NeoRomantica Cruise
- 02
- Developed an IoT-based smart vessel application system
- 07
- Opened a new information system HELIOS
- 09
- Introduced "PANSTAR GENIE" vessel
- 11
- Commenced the Busan-Nagoya route service by PANSTAR GENIE
- 12
- Introduced "PANSTAR GENIE NO.2" vessel
2018. 04
- Commenced the Busan-Shimonoseki route service by PANSTAR GENIE NO.2
- 04
- Obtained a local Shinomoseki customs clearance license in Japan
: SANSTARLINE CO., LTD.
2019. 04
- Appointed the exclusive model for PanStar Cruise : PANSTAR LINE.COM CO., LTD.
- 08
- The 20th Anniversary of SANSTARLINE CO., LTD.
- 10
- Opened the Hydrogen Eco-friendly Energy Research Center
: PANSTAR ENTERPRISE CO., LTD.
2020. 06
- Registered as an express transport company, Commenced international
marine express cargo services
- 07
- The 30th Anniversary of PanStar CO., LTD.

- 2017.05
- 22ndOcean Day, Stone Tower Order of Industrial Service Merit
: Representative Director
- 12
- Costa Award : PANSTAR ENTERPRISE CO., LTD.
- 2018.03
- Commissioner of Customs Commendation : PANSTAR CO., LTD.
- 11
- Osaka Tourism Bureau Letter of Appreciation : SANSTARLINE CO., LTD.
- 12
- Cruise of the Year Special Award : SANSTARLINE CO., LTD.
- 2019.05
- State Emergency Control Merit Prime Minister Commendation
: PANSTAR LINE.COM CO., LTD.

PANSTAR EXPRESS CARGO

PanStar Korea-Japan Logistics Starting from Japan's Industrial Center City

By offering a non-stop shipping service to Osaka, which is an industrial center of Japan with the excellent accessibility to neighboring regions such as Hanshin and Keihin, PanStar minimized the shipping hours between exporters and importers. Moreover, by offering a non-stop shipping service to Tsuruga, one of major ports in Japan's western coast, PanStar provides daily express services to the entire regions in Japan. PanStar developed an ultra-express service in which the Korea-Japan door to door lead time is only 2 days by establishing the oneday customs clearance and loading and unloading system based on its own customs clearance license and sailing between Korea and Japan in only 18 hours with PanStar's own ferry boats.

HOT DELIVERY SERVICE

Arrives at a place of import in the morning of the immediately next day under the shortest transportation time
By linking marine transportations of the local inner harbor ferries with inland transportations and JR railway transport in Japan through establishment of its precise schedule and speedy customs clearance system, PanStar established express transportation service that can deliver cargoes to the entire regions of Japan

STATE-OF-THE-ART SAFETY SHIPPING SYSTEM

By minimizing a vessel's rolling through a vessel body stabilizer, we secured the stability of cargoes such as containers and bulk cargoes, and stable shipping is possible even in bad weather such as summer typhoon under our state-of-the-art shipping system

ALL TYPE CARGO

PanStar's RO/RO vessels regularly transport from FCL types such as DRY, RF and FR, etc. and LCL types for cost saving to Bulk types such as semiconductor equipment, construction machinery and press machineries, etc. for which transportation by containers is not feasible

ROLL-ON / ROLL-OFF

As a RO/RO vessel, rapid and stable loading and unloading works are possible using the bow and stern ramps and PanStar safely transports various cargoes such as non-vibration vehicles and high-cost manufacturing equipment
PanStar minimizes external exposure of break bulk cargoes in case of rain as trucks load and unload cargoes inside the vessels



PANSTAR DREAM
- Gross Ton : 21,688M/T
- L.O.A : 160.00M
- Speed : 22.70kn
- Cargo Capacity : 184TEU



SANSTAR DREAM
- Gross Ton : 11,820M/T
- L.O.A : 149.57M
- Speed : 21.50kn
- Cargo Capacity : 210TEU



PANSTAR GENIE
- Gross Ton : 13,682M/T
- L.O.A : 161.13M
- Speed : 18.00kn
- Cargo Capacity : 264TEU



PANSTAR GENIE NO.2
- Gross Ton : 13,681M/T
- L.O.A : 161.13M
- Speed : 18.00kn
- Cargo Capacity : 264TEU



PANSTAR DREAM

PORT	SUN	MON	TUE	WED	THU	FRI	SAT
BUSAN	Departure 15:00		Arrival 10:00 Departure 15:00		Arrival 10:00 Departure 15:00		Arrival 12:00
OSAKA		Arrival 10:00 Departure 15:00		Arrival 10:00 Departure 15:00		Arrival 10:00 Departure 17:00	

PANSTAR GENIE

PORT	SUN	MON	TUE	WED	THU	FRI	SAT
SHIDAO						Arrival 09:00 Departure 18:00	
BUSAN					Arrival 09:00 Departure 12:00		Arrival 16:00 Departure 21:00
TOKYO		Arrival 08:30 Departure 17:00					
NAGOYA			Arrival 08:00 Departure 14:00				

SANSTAR DREAM

PORT	SUN	MON	TUE	WED	THU	FRI	SAT
MASAN	Departure 07:00			Arrival 10:00 Departure 12:00			Arrival 10:00
BUSAN	Arrival 09:00 Departure 12:00			Arrival 14:00 Departure 16:00			
TSURUGA		Arrival 08:00 Departure 12:00			Arrival 12:00 Departure 16:00		
KANAZAWA			Arrival 08:00 Departure 12:00			Arrival 08:00 Departure 12:00	

P.K.L.B

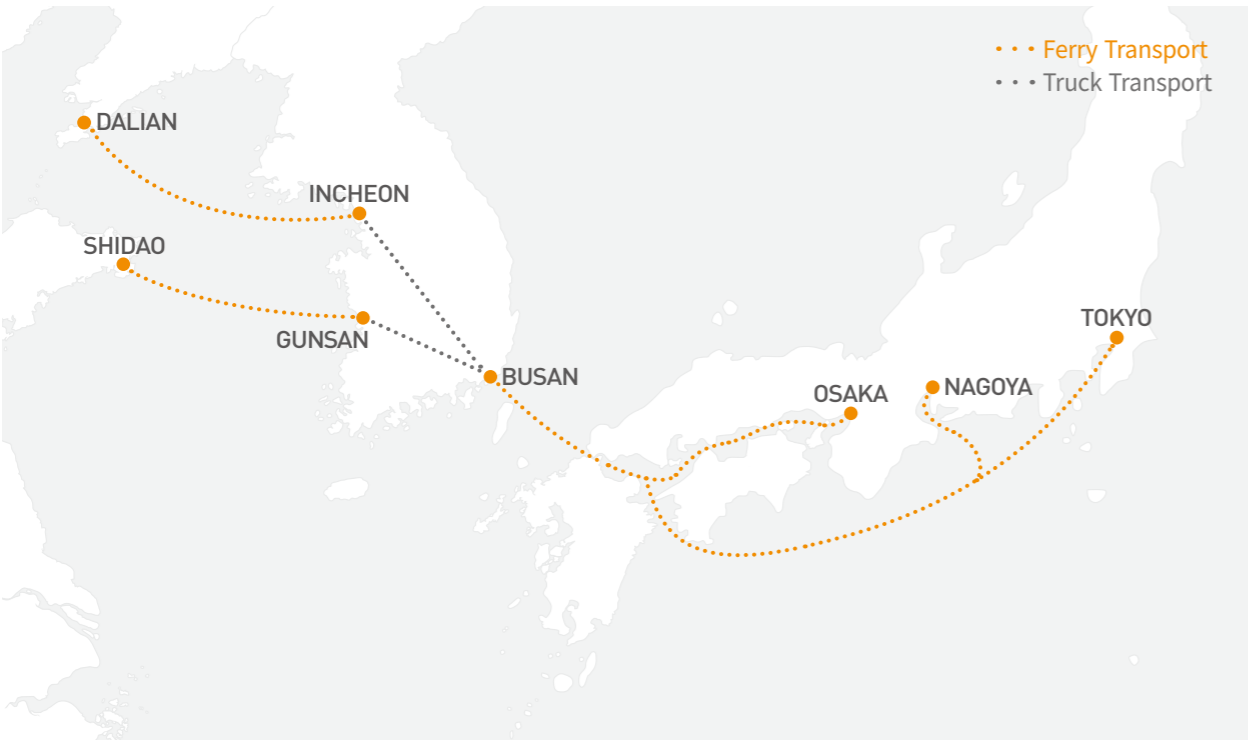
PanStar Korea Land Bridge

New Logistics Route Connecting "China – Korea – Japan"

PanStar Korea Land Bridge is the service that enables arrivals from China to Japan's Osaka, Tokyo and Tsuruga within 3 days (lead time 40 hours) by connecting the Korea-China car ferries currently operating in the entire regions of China such as Shandong and PanStar ferries operating in the Korea-Japan routes with inland bonded transportations. We established the service route that enables saving of logistics costs for cargo owners by delivering cargoes that were previously transported from China to Japan through the air or air and sea service within the equivalent lead-time.

PORT	SUN	MON	TUE	WED	THU	FRI	SAT
SHIDAO		Departure 18:00		Departure 18:00			Departure 18:00
GUNSAN	Arrival 09:00		Arrival 09:00		Arrival 09:00		
BUSAN	Departure 15:00		Departure 15:00		Departure 15:00		Departure 21:00
OSAKA		Arrival 10:00		Arrival 10:00		Arrival 10:00	

PORT	SUN	MON	TUE	WED	THU	FRI	SAT
DALIAN						Departure 17:00	
INCHEON							Arrival 09:30
BUSAN	Departure 15:00		Departure 15:00		Departure 15:00		Departure 21:00
TOKYO		Arrival 08:30					
NAGOYA			Arrival 08:00				



T.S.P.S

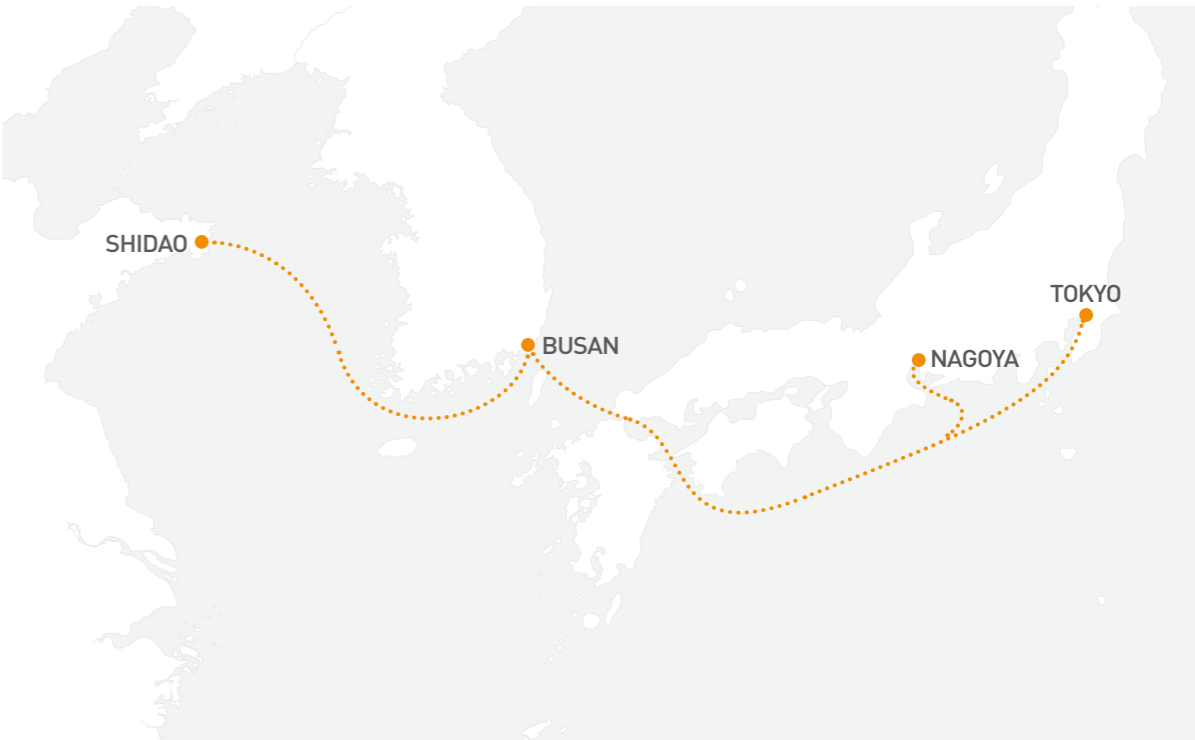
Trilateral Sea-highway PanStar Service

"China – Korea – Japan" Direct Transport Service without T/S

The Trilateral Sea-highway PanStar Service is a marine service with freight delivery under shortest hours in the Korea-China and China-Japan routes by directly operating PanStar ferries between China Shidao Port–Busan Port–Japan Tokyo and Nagoya Ports. It is the Hot Delivery Service in which China's products can be delivered to Japan's major cities in 3-4 days and Japan's products can also be delivered to Shandong and the entire regions of China in 3-4 days.



PORT	SUN	MON	TUE	WED	THU	FRI	SAT
SHIDAO						Arrival 09:00 Departure 18:00	
BUSAN					Arrival 09:00 Departure 12:00		Arrival 16:00 Departure 21:00
TOKYO		Arrival 08:30 Departure 17:00					
NAGOYA			Arrival 08:00 Departure 14:00				



P.U.E PanStar Ultra Express

Express Freight Service as Rapid and Economic as Air Transportation

By linking our ferries operating between Busan and Japan with Japan Railway freight system, which is renowned for its thorough and precise on-time schedule, PanStar established logistics routes that connect the entire regions of Japan. PanStar Ultra Express is a Hot Delivery Service that delivers within 2 days export and import cargoes of major cities in Japan to any inland part for which the port service is not available.

Possession of Railway Transportation License

Only 1.3% of all logistics companies in Japan are in possession of the railway transportation license

On-Time Schedule

The length of Japanese territory is around 3,000 km from its south to north
We are capable of providing one-day cargo delivery service to any place in Japan by using railway transportation network that connect approximately 140 railway terminals throughout Japan

Establishment of Ultra Express Transport Mode

By combining our own ferries and railway transport, we developed the ultra express transport mode (PUE) that can replace air transportation
Which saves transportation costs in an innovative manner compared to aviation logistics



P.I.E.X PanStar International Express Services

PIEX Service provided in Korea, China and Japan which has become even faster by utilizing the one-day customs clearance and integrated logistics system

E-Commerce business among Korea, China and Japan will be expanding even faster through 'PIEX(PanStar International Express)', the new concept of PanStar's international marine express cargo services primarily based on PanStar's express cargo ferries. PanStar offers new international logistics services using PIEX, international express cargo services, which has maximized efficiency by operating all the processes required for international express transportation including local logistics, packing, clearance, bonded transportation and marine transportation, etc.

PanStar Express Cargo Ferries

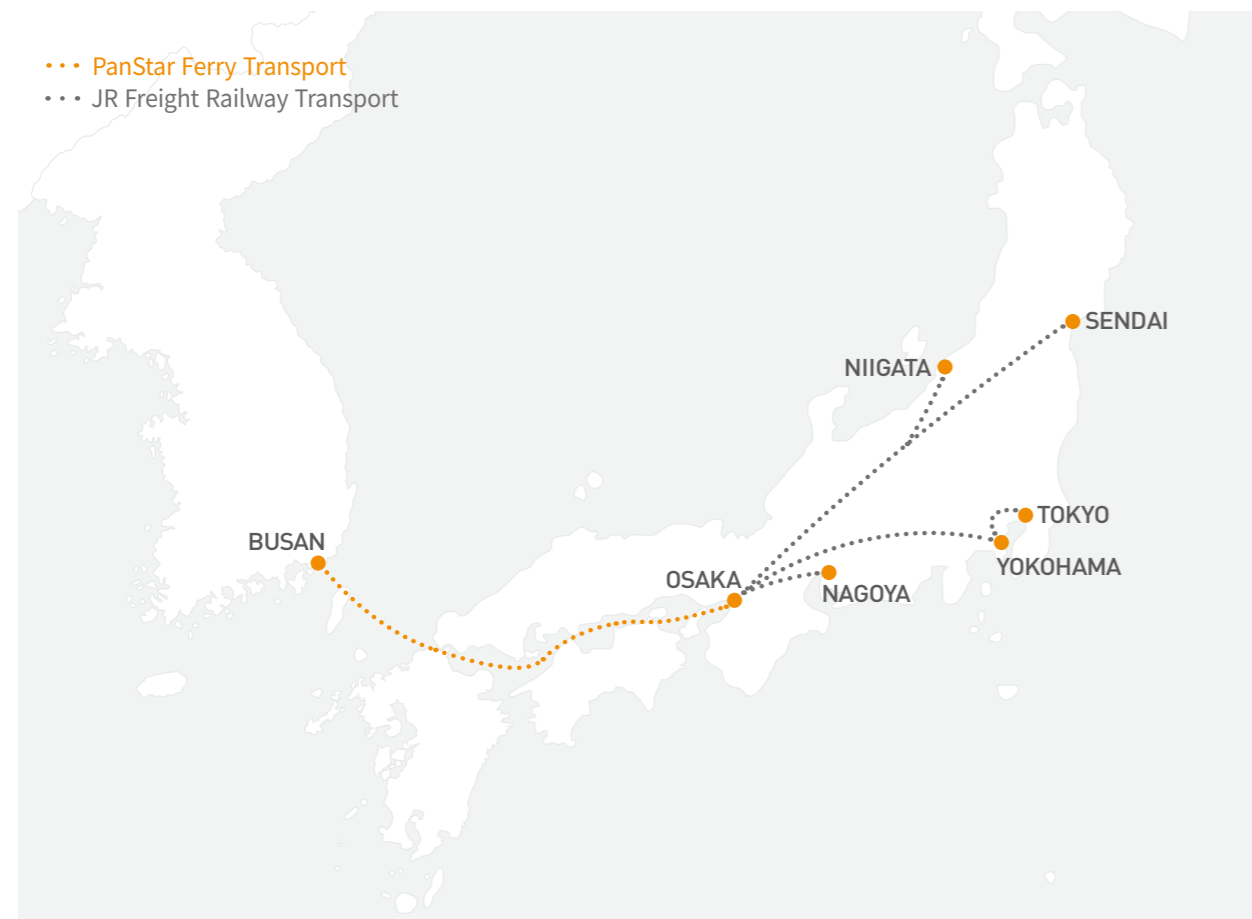
Achieves daily express delivery service throughout the mainland of Japan by offering a non-stop shipping service to major(Japanese) ports such as Osaka, Tokyo, Nagoya, Shimonoseki and Tsuruga

SanStar Line

Obtained the customs clearance licenses in Osaka and Tokyo for the first time as a local company
Offers the one-stop service through international transportation service and export and import customs clearance service

Yongdang Express Cargo Clearance Division in Busan

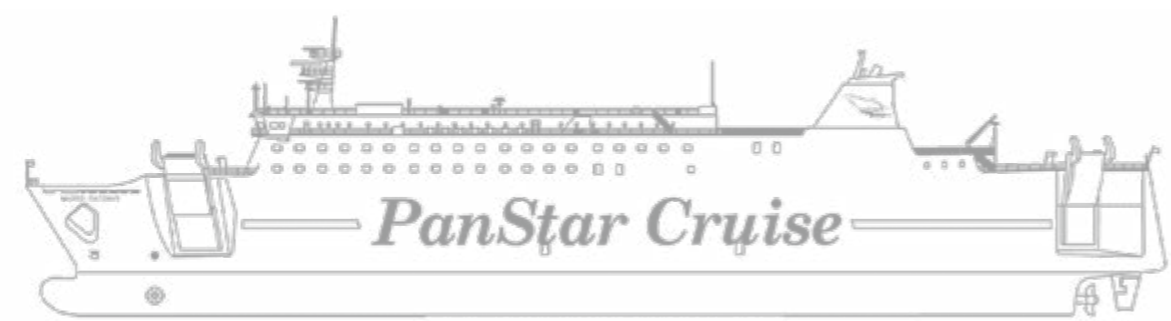
Processes rapidly increasing E-Commerce express cargoes departing from Japan and China through the International Express Cargo Clearance Division of Yongdang Customs which has been established at Busan Port in 2020 in order to disperse and bring in such express cargoes to Busan Port that were previously concentrated on Incheon Port and Pyeongtaek Port
PanStar is registered as No.1 express transport company at International Express Cargo Clearance Division of Yongdang Customs in Busan and offers optimized services



PANSTAR CRUISE

Hotel on the Sea and Diverse and Elegant Hotel Rooms

Elegant cruise trips with even more advanced services.
You can enjoy comfortable and cozy cruises with our luxurious cruise cabins, facilities and distinguished services.
Create new memories with friends and family and feel the charm of travel.



PANSTAR DREAM | Year of Building : 1997 Speed : 22.7knots LOA : 160m
Nationality : Republic of Korea PAX Capacity : 545persons BEAM : 25m



Royal Suite



Deluxe Suite



Junior Suite



Family Room



Standard Room A Standard Room A Combination



Standard Room Twin Bed Standard Room Bunker Bed



Café Yume



Restaurant



The Paradise



Duty Free Shop



Convenience Store



Cherry Blossom



Masquerade



Therapy House



Sauna



Sushi Bar



Karaoke



Game Room

OSAKA CRUISE FERRY

Special Trip from the Moment of Boarding, Special Way to Japan

You can enjoy comfortable and elegant cruise trips with our luxurious cruise cabins and facilities, enjoyable events, and distinguished services. You can relish beautiful sceneries of Setonaikai Strait and great food as well as various benefits available only for Cruise Zone customers.

Relishing the Best Marine Scenery in Japan

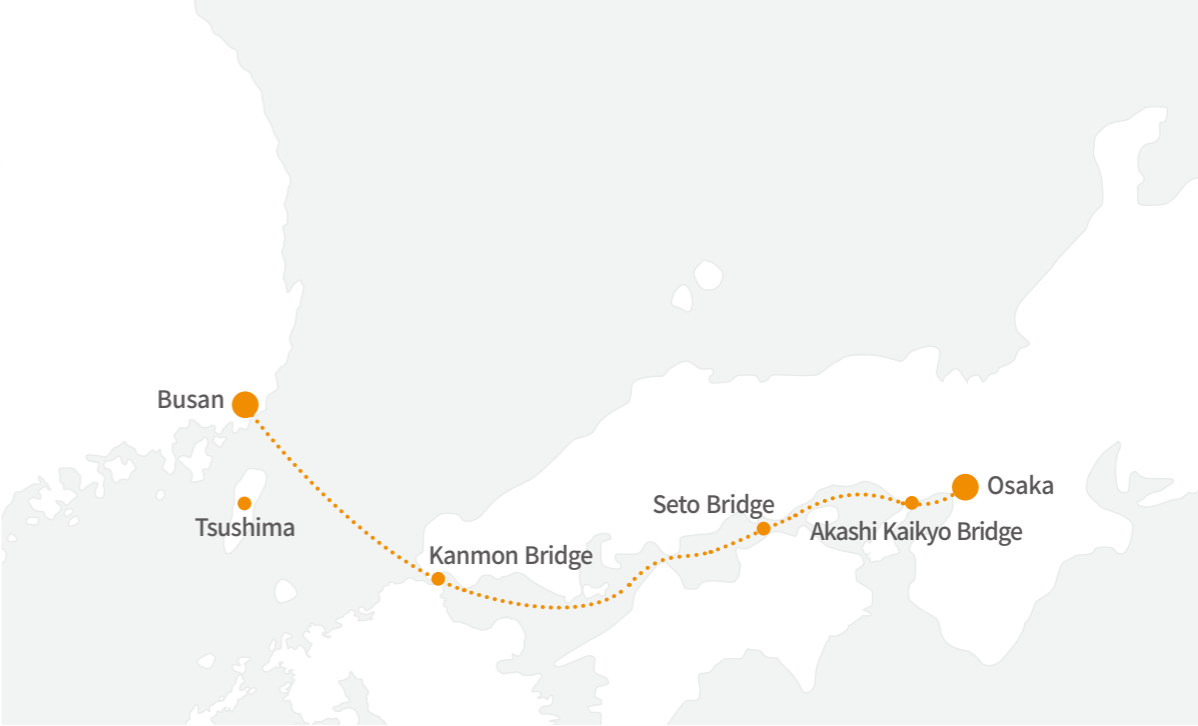
The magnificent sceneries of Setonaikai, Japan's marine national park, Seto Bridge, and Akashi Strait Bridge, the longest suspension bridge in the world, offer stirring inspirations

The Only Cruise to Center of Japan

Convenient access between Korea's Busan and Japan's Osaka and Kansai and very superb accessibility between the terminal and the city center

The First and Best Cruise in Korea

Offers delight through various performance shows and events
With convenient facilities and services, you can enjoy relaxation and romance of cruising that are never available in airplane trips



	Departure	Tsushim	Kanmon Bridge	Seto Bridge	Akashi Kaikyo Bridge	Arrival
Busan > Osaka	Sun, Tue, Thu 15:00	Sun, Tue, Thu 16:30	Sun, Tue, Thu 21:30	Mon, Wed, Fri 05:30	Mon, Wed, Fri 08:30	Mon, Wed, Fri 10:00

	Departure	Akashi Kaikyo Bridge	Seto Bridge	Kanmon Bridge	Tsushim	Arrival
Osaka > Busan	Mon, Wed 15:30	Mon, Wed 16:30	Mon, Wed 19:30	Tue, Thu 03:30	Tue, Thu 08:30	Tue, Thu 10:00
	Fri 17:00	Fri 18:30	Fri 21:30	Sat 05:30	Sat 10:30	Sat 12:00

CruiseTel

Cruise Trip + Hotel
Must-have for cost-sensitive travelers with delight in togetherness and exciting schedules! Create great memories with a special trip in Kansai~

Air Cruise

Cruise Trip + Airplane Trip
Even more enjoyable trip through a special meeting of PanStar Cruise and airplane! Create special memories in five-senses satisfying Osaka~

Tonight Cruise

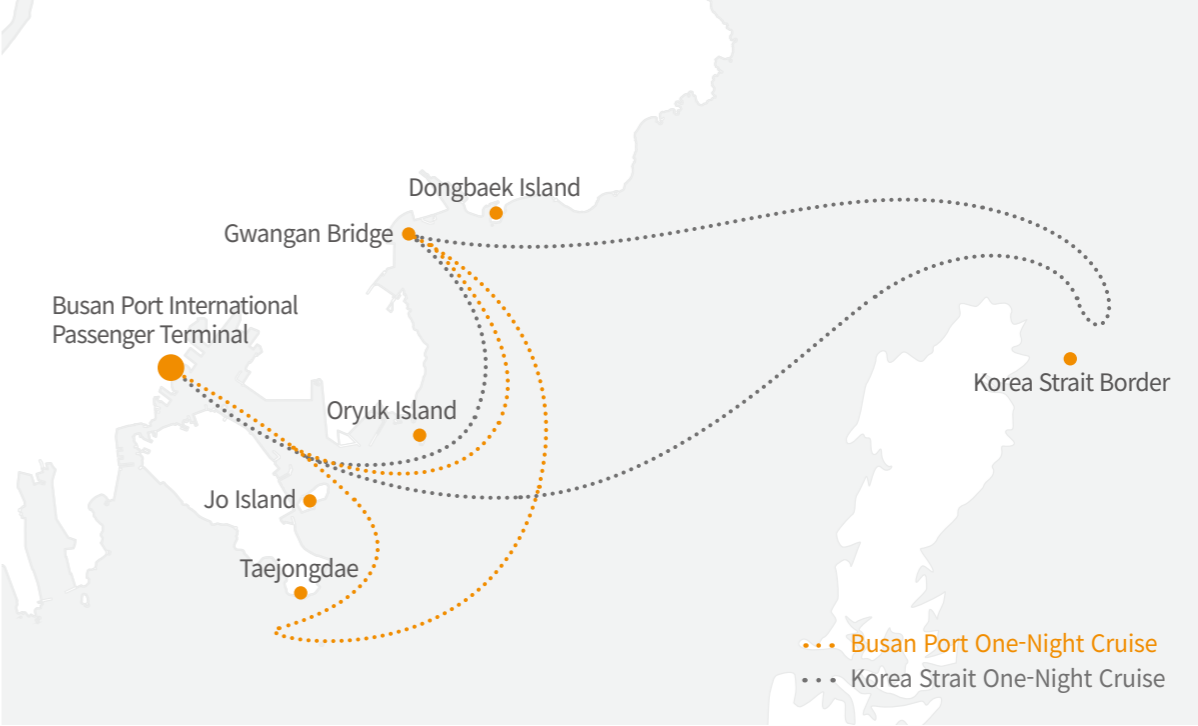
Cruise Trip + Vessel Onboard Buffet + Bus Tour
Cruise with a luxury salon bus in a nice and relaxing manner! Add romance to your trip and create unforgettable memories~



BUSAN ONE NIGHT CRUISE

Island of Fantasy Floating in Busan’s Coastal Waters Every Weekend

You can enjoy the beautiful ocean of Busan, one of the best coastal cities in Korea, as well as fantastic fireworks embroidering the night sky on board the cruise ship. You can experience comfortable rooms, convenient facilities, performance shows on splendid stages and various participating events. Equipped with dinner and breakfast cruise buffet meals, welcome drinks, and stages and sound equipment for various meetings and events, the cruise is a perfect fit for events such as home coming days, general assemblies, outings, and picnics.



	Departure	Ticket Issue	Boarding Check-in	Buffet	Firework	Disembark
Busan Port One-Night Cruise (Mar ~ Oct)	Sat 17:00		15:50 - 16:50			
		14:00 - 15:30		Dinner 18:00 - 19:50 Breakfast 07:20 - 08:50	20:50	Sun 09:30
Busan Port One-Night Cruise (Nov ~ Feb)	Sat 16:30		15:20 - 16:20			
Korea Strait One-Night Cruise (Every 3rd Saturday)	Sat 15:00	13:00 - 14:00	14:20 - 14:40	Dinner 18:00 - 19:50 Breakfast 06:50 - 08:20	20:50	Sun 09:00

Busan Port One-Night Cruise

You can enjoy Busan's coast and fantastic night scenery such as Jo Island, Taejongdae, Oryuk Island and Gwangang Bridge among others as well as hundreds of onboard fireworks embroidering the night sky as well as various events and performances



Korea Strait One-Night Cruise

As an international cruise that you can meet every third Saturday of every month, the cruise provides close views of Korea Strait border and you can enjoy duty free shopping and even more diverse onboard events



Charter Cruise (Schedule TBD)

As a product that rents (leases) a cruise, it can be used in cases of state and local organizations' events, corporate events (research and client invitation, etc.), and personal events (marriage, party, and alumni meeting, etc.)



PANSTAR ENTERPRISE

Heshbon Business Department

Leading the Vehicle Maintenance Equipment Market, Global Maintenance Brand HESHBON

PanStar Enterprise developed the X-TYPE lift for the first time in Korea, and passed the safety test in the state-certified testing agency for the first time in the industry, obtaining the Q-mark. HESHBON, the vehicle general maintenance equipment brand, is leading the market by developing high-tech equipment such as tyre wheel balance, tyre changers, and wheel alignment among others as well as various models of lifts based on its verified technological prowess.

It has been making full commitments to the development of new products after establishing a corporate R&D center in 2001 and it was listed on KOSDAQ in 2002.

HESHBON has been interacting with global populations by establishing its sales network in around 45 countries including the US, Europe and Japanese markets, the advanced countries in maintenance equipment. By obtaining the CE-mark, the Europe's safety certification mark, HESHBON's maintenance equipment have received global recognitions for their quality and safety.

Operation of Corporate R&D Center

Recognized as a corporate R&D center by the Korea Industrial Technology Association for the first and only time in the Korean maintenance industry

Application for Patent and Utility Model Rights

Possesses the nationwide After Sales Service network in Korea and provide a 2-year free warranty

Nationwide After Sales Service Network

The company that uniquely possesses the nationwide After Sales Service network in the Korean maintenance industry, providing one year guarantee

Nationwide Agencies and Service Centers

Operates 23 sole distributors/agencies and 17 service centers nationwide



Cruise Business Department

Traditional international cruise trips departing from and arriving in Korea

Now, you can comfortably enjoy traditional cruise trips in Korea that could be offered by international shipping companies. Domestically departing/arriving cruises presented by PanStar Cruise, which has been trying to popularize cruise trips, in cooperation with Costa Cruises within Carnival Corporation, the world's No.1 cruise group! Costa Cruise gives you an Italy-like atmosphere and joy as if you arrived in Italy from the very moment you step on board as reflected in its motto "Italy at Sea".

PanStar Enterprise, the proud winner of "Best Operation Agency" in 2018 chosen by Costa Cruise, has been satisfying ever growing and extensive demand for cruises from domestic companies, travel agencies and general tourists through its domestic cruise business using its own vessels together with cooperation with overseas cruise lines and has become the leading cruise company in the domestic cruise industry, which will generate new businesses in the future.



Trading Business Department

Designs, develops, converges and promotes high technologies and distributes them to the global market

PanStar Enterprise focuses on planning and promoting the leading technology business on a global level. PanStar plans to grow into a high-tech specialized trading company by establishing a value chain that combines technical planning, business development, technological convergence, production management, marketing and logistics management in association with the core competencies of the PanStar Group and overseeing the entire processes of the above.

Energy Storage System

Conducts business supplying lithium iron phosphate (LiFePO4) batteries and control systems(BMS) to companies conducting communication, energy and infrastructure services at the global market by promoting an industrial energy storage system from the technical planning stage
Develops and globally distributes FESS(Factory Energy Storage System), RESS(Renewable Farm), TESS (Telecommunication), HESS(Home) and the related solutions based thereon such as Virtual Power Plant(VPP) and Automated Guided Vehicles(AGV), etc

Communication Equipment and Related Materials

Plans, co-develops and globally distributes the next generation of communication equipment including 5G
Discovers various business opportunities applying the next generation of the network based technology focused on IoT(Smart Factory, Smart Ship etc.)

Semiconductor Wafers

Operates businesses of consignment manufacturing, processings and distributings various qualities of semiconductor wafers ranging from prime grade to test grade primarily for specialized fields at the global market through a supply contract with a global wafer manufacturing company

Raw Materials and Construction Materials

Operates businesses of Performs consignment manufacturing, processings, importings and exportings steel, wood and chemical products and construction materials



Software & Platform Business Department

Operates business based on authenticated encryption technology and establishes networks and platforms using such technology

We design the next generation networks and develop application technologies based on authentication and encryption technology which we obtained a patent on, and present the same in the form of various products and services to the global market. Especially, we are currently targeting the overseas market by developing various types of platforms and services starting from vessels, logistics, manufacturing and wireless communication sectors.

Device Verification Solutions

Provides verification solutions for ultralight devices such as sensors and IoT devices, etc. as well as various information and communication equipment
Provides user's secondary verification and system verification on various applications, websites and systems

Data Encryption Solutions

Provides solutions that enable real time transmission and storage of encrypted data such as various transaction information and user data or files as well as bulk image data without delay by means of simultaneous encryption from the data generation stage
Develops data protection solutions and services either interconnected with the encryption of the existing terminals and communication intervals or operated independently

Network and Platform Establishment Business

Establishes the next generation network environment such as 5G, Smart Logistics and Smart Factory, etc. and combines them with the relevant solutions thereof
Establishes and develops various platforms optimized for different types of network environments in collaboration with global companies



PANSTAR TECHSOLUTION

Installations of Ballast Water Treatment System and SOx Scrubber, Global Engineering Company

PanStar TechSolution is a global engineering company that offers installation solutions for Ballast Water Treatment System and SOx Scrubber that are installed in vessels.

Our engineers with specialized skills and sales business team are supporting the globe's shipyards and shipowners based on a wide range of installation experiences. From the basic concepts to installation solutions, we offer a high-level technical service to our clients.

Competitive Pricing

Offers a reasonable quote by proceeding with its own system from 3D scan to basic design, detailed design, plan approval, and installation supervision

Consulting Service

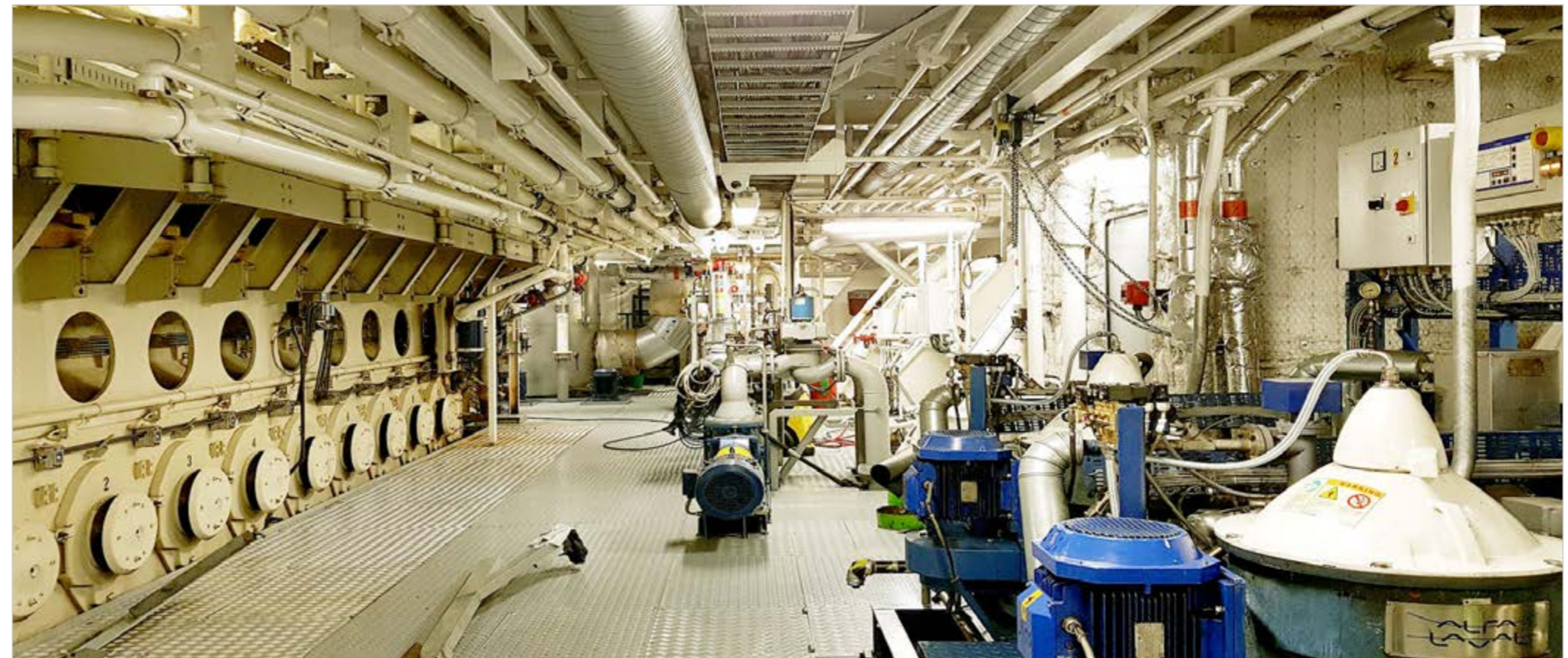
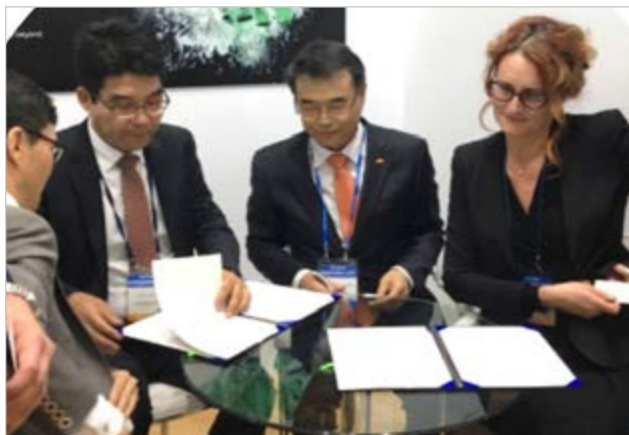
Offers the consulting service through actual vessel environment survey and objective data analysis so that clients can decide the appropriate system

Abundant Installation Experience

With diverse systems and abundant installation experiences, instantly responds to any variables that occur at the time of installation, and thereby saves construction period and cost

Offers Integrated Engineering

With design designers and service engineers, performs all tasks related to installation on behalf of clients



PANSTAR TREE

A Company Specializing in Ship & Crew Management, Ship Operation

PanStar Tree is a management company specializing in passenger ships aiming to view situations from the perspective of the owners, which offers differentiated management services for the owners in respect of ship, crew and safety such as cost saving and ship management consulting, etc.

We effectively performs ship management services through the ship management system and financial management system that have adopted the company's knowhow on the management of domestic passenger ships and express ferries, and also provides monitoring services which enable the owners to check information on the ship's operations and management conditions online as well as regular management reports.

In particular, we offers the finest solutions for the management and operation of passenger ships based on its years of experiences including passenger ship management, crew training and onboard service operation, etc.

Shipbuilding Supervision & Management

Consults with shipyards to build ships in an energy-saving and environment friendly manner while remaining in compliance with various international conventions the classification rules and supervises/manages the shipbuilding processes by suggesting the optimal shipbuilding plans

Crew Management

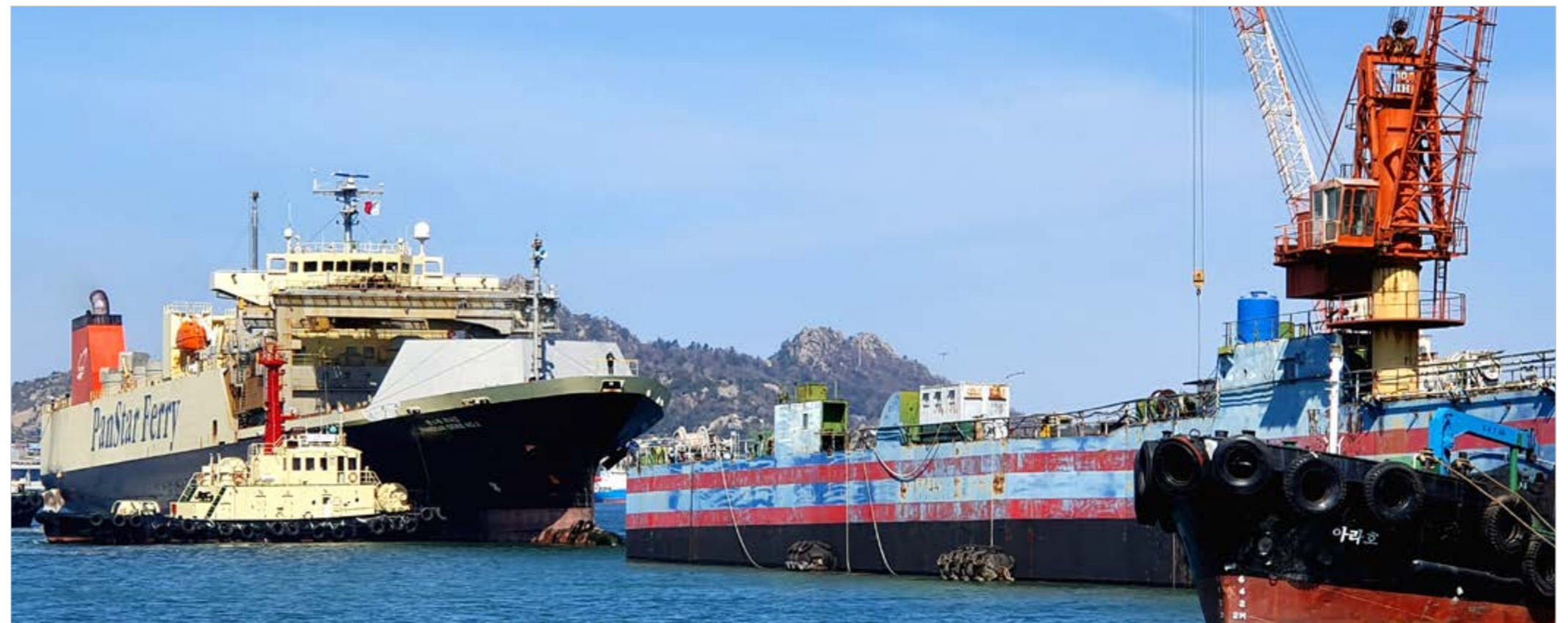
Offers smooth handling service via our systematic crew management service encompassing from recruitment of crew to their resignation Controls precise ship operation schedules and creates efficient work environment for crew and optimizes the crew management costs by handling data such as working hours, wages and holidays, etc

Public Affairs Management

Enhances transparency by conducting a competitive tender for suppliers of machinery parts and ships' articles and optimal inventory management by avoiding duplicate purchases of unnecessary items Minimizes bunker oil consumption by analyzing ship operations and the optimal ordering of bunker oil based on market analysis and maintenance of adequate quantity of bunker

Safety Management

Continuously maintains and improves the safety management system installed for safe operation of ships and environment protection so that it is constantly in compliance with requirements of ISM CODE and the applicable laws



PANSTAR BNGD

Establishment of Optimal System and Achievement of Best Utility and Economic Feasibility

PanStar Busan Newport Global Distripark, as a resident in Busan Port's newport free trade zone, has price competitive edges in logistics costs pursuant to tax benefits offered to cargo owners, shippers, and resident companies. BNGD is located in the optimal location for higher-value added tasks (assembly, disassembly, processing, repair, inspection, and repackaging, etc.) and transshipment cargo trading, and BNGD is equipped with the real-time supervisory and reporting system by allocating responsible personnel for integrated control. Furthermore, BNGD secures mobility and safety by allocating exclusive and special loading and unloading equipment for warehouses with different functions. BNGD is focused in developing higher-value added logistics services through establishment of overseas bases and partnerships with global logistics companies.

RO/RO Vessel Connected Service

Achieves prompt loading and unloading and non-stop logistics service through RO/RO vessels by establishing a network with Japan's total logistics company. Saves transportation costs since the logistics center and the newport terminal are located nearby to each other.

Establishment of Advanced Base for Trading

Enhances products' global competitiveness through saving of logistics costs such as reduction of transportation distance, assembly, labeling, packaging, and storage among others.

Reduction of Lead Time and Cost Saving

By combining inland and marine transportations, reduces lead time, saves inventory costs through informatization management, and offers logistics consulting.

Creation of New Cargoes with High Added Values

Offers the logistics services that take advantages of the Busan Newport's low storage fees and cargo handling fees among others.

Offers the state-of-the-art storage service for special cargoes

Operates storage facilities for hazardous substances (Outdoors 990m², Indoors 300m²) and constant temperature and humidity chambers (435m²).

Additional Services



Packing



Assembling



Sorting



Labelling



Weighing



Disease Control



Total area 40,106㎡ | BNGD 1F 16,525㎡ | 2F 4,958㎡ | Warehouse with capacity of 23,000R/T, Yard Container 3,150TEU



SANSTARLINE

Total Logistics Company Offering Korea-Japan Freight Transportation and Export and Import Customs Clearance Service

SanStar Line is an international total logistics company engaged in international liner business, shipping agency, freight forwarding, customs clearance service, warehousing, JR railway transportation and truck transportation services, etc. in Japan. By obtaining the customs clearance licenses in Osaka and Tokyo for the first time as a local company, SanStar Line offers Hot Delivery Service which enables export cargoes from Korea or China to be customs-cleared, warehoused and transported inland immediately upon their arrival in Japan. Through combination of complex logistics services with our ferries, we have achieved lead time that allows for the replacement of air transportation, which saves transportation costs significantly compared to aviation logistics. Moreover, in June 2008, we acquired Japan's domestic railway transportation license and thereby commenced the ferry and railway transportation services using the network that connects 140 railway terminals in Japan nationwide, and now have secured logistics cost saving and service diversity as well as competitiveness with capacity to respond flexibly by connecting Korea, China and Japan as one.

Possession of Customs Clearance License and Railway Transportation License
Possesses Japan's customs clearance license(Osaka, Tokyo, and Shimonoseki) and JR railway transportation license

Possession of Information Processing System
Established the cargo direct customs clearance system and logistics system in Japan and possesses the information processing system

DOOR TO DOOR SERVICE
Offers the door-to-door service in Japan nationwide by using the international transportation services



List of Obtained Permits

- 1999.12.14 First-Class Transportation Business
- 2006.11.08 Osaka Customs Clearance Business
- 2007.03.15 First-Class Travel Business
- 2008.06.27 Second-Class Cargo Transportation Business
- 2008.12.09 Tokyo Customs Clearance Business
- 2015.03.30 First-Class Cargo Transportation Business
- 2015.12.18 Foreigner International Second-Class Cargo Transportation Business
- 2016.07.29 General Chartered Passenger Vehicle Transportation Business
- 2018.04.17 Shimonoseki Customs Clearance Business



PANSTAR NETWORK

PANSTAR CO., LTD.

Overseas cargo transportation, International freight forwarding, Shipping agency

[Seoul HQ]

5FL., ChildFund Bldg., 20, Mugyo-ro, Jung-gu, Seoul
TEL. 02 - 779 - 4011 FAX. 02 - 775 - 7533

[Busan Branch]

PanStar Cruise Plaza, 30, Haegwan-ro, Jung-gu, Busan
TEL. 051 - 468 - 0501 FAX. 051 - 464 - 0492

PANSTAR ENTERPRISE CO., LTD.

Automobile maintenance equipment, Cruise services, Trading, Stevedoring services, International cargo/ freight forwarding, International express transportation

[Busan HQ]

PanStar Cruise Plaza, 30, Haegwan-ro, Jung-gu, Busan
TEL. 1577 - 3520 FAX. 051 - 256 - 2930

[Incheon Branch]

108, 249beon-gil, Robot Land-ro, Seo-gu, Incheon
TEL. 1577 - 3520 FAX. 032 - 585 - 3535

[Seoul Branch]

4FL., ChildFund Bldg., 20, Mugyo-ro, Jung-gu, Seoul
TEL. 02 - 774 - 6811 FAX. 02 - 776 - 6811

[PIEX International Express Cargo Office]

4FL., ChildFund Bldg., 20, Mugyo-ro, Jung-gu, Seoul
TEL. 02 - 777 - 5482 FAX. 02 - 772 - 5567

PANSTAR TECHSOLUTION CO., LTD.

EGCS retrofit engineering & BWMS

[Busan HQ]

PanStar Cruise Plaza, 30, Haegwan-ro, Jung-gu, Busan
TEL. 051 - 469 - 8801 FAX. 051 - 469 - 8215

[Seoul Branch]

4FL., ChildFund Bldg., 20, Mugyo-ro, Jung-gu, Seoul
TEL. 02 - 776 - 7711 FAX. 02 - 775 - 6850

PANSTAR LINE.COM CO., LTD.

Overseas passenger transportation, Cruise services(Cruise passenger transportation), International cargo forwarding

[Busan HQ]

PanStar Cruise Plaza, 30, Haegwan-ro, Jung-gu, Busan
Cargo TEL. 051 - 465 - 4500 FAX. 051 - 469 - 8208

[Seoul Branch]

5FL., ChildFund Bldg., 20, Mugyo-ro, Jung-gu, Seoul
Cargo TEL. 02 - 756 - 4500 FAX. 02 - 756 - 4550
Passenger TEL. 02 - 756 - 7711 FAX. 02 - 775 - 6850

[Busan Port International Passenger Terminal Office]

3FL., Busan Port International Passenger Terminal, 206, Chungjang-daero, Dong-gu, Busan
Passenger TEL. 1577 - 9666 FAX. 051 - 469 - 6179

PANSTAR TREE CO., LTD.

Ship Management, Construction

[Busan HQ]

PanStar Cruise Plaza, 30, Haegwan-ro, Jung-gu, Busan
TEL. 051 - 469 - 8801 FAX. 051 - 469 - 8215

[Changwon Branch]

3FL., 201, Dream Bay-daero, Masan Hapo-gu, Changwon, Gyeongnam
TEL. 055 - 240 - 4823 FAX. 055 - 240 - 4821

PANSTAR BNGD CO., LTD.

General/Bonded Warehousing, International cargo forwarding, Weight verification

56, Sinhang 7-ro, Changwon, Gyeongnam (Nammun-dong)
TEL. 055 - 981 - 3241 FAX. 055 - 551 - 1771

SANSTARLINE CO., LTD.

Overseas cargo transportation, International freight forwarding, Shipping agency, Customs clearance services, Travel businesses /Bus transportation services

[Osaka HQ]

7FL., Osaka Kokusai Bldg. 2-3-13, Azuchi-machi, Chuo-ku, Osaka
Cargo TEL. 81 - 6 - 6267 - 9778 FAX. 81 - 6 - 6267 - 9766
Customs TEL. 81 - 6 - 6271 - 3233 FAX. 81 - 6 - 6271 - 8832

[Osaka International Ferry Terminal]

2FL., International Ferry Terminal, 20-52, 1-chome Nankokita, Suminoe-ku, Osaka
Passenger TEL. 81 - 6 - 6614 - 2516 FAX. 81 - 6 - 6614 - 2518
Truck/Bus TEL. 81 - 6 - 6614 - 2581 FAX. 81 - 6 - 6614 - 2700

[PIEX Express Cargo Warehouse]

5-23, 4-Chome, Nanko Higashi, Suminoe-ku, Osaka-shi
TEL. 81 - 6 - 6569 - 2230 FAX. 81 - 6 - 6569 - 2238

[Tokyo Branch]

7FL., Daichi Ginza Bldg., 12-28, 7-chome Ginza, Juo-ku, Tokyo
Cargo TEL. 81 - 3 - 3544 - 5123 FAX. 81 - 3 - 3544 - 5126
Customs TEL. 81 - 3 - 3544 - 5123 FAX. 81 - 3 - 3544 - 5126

[Hokuriku Office]

3FL., Kanazawa Port Cruise Terminal, RI-65, Muryojimachi, Kanazawa-Shi Ishikawa
TEL. 81 - 76 - 254 - 6884 FAX. 81 - 76 - 254 - 6885

[Nagoya Office]

6FL., Mugenmarunouchi Bldg., 23-21, 3-chome, Marunouchi, Naka-ku, Nagoya
TEL. 81 - 52 - 950 - 6630 FAX. 81 - 52 - 950 - 6631

SP TRADING CO., LTD.

Trading, Distribution services, Container leasing services

2FL., International Ferry Terminal, 20-52, 1-chome Nankokita, Suminoe-ku, Osaka
TEL. 81 - 6 - 6569 - 2520 FAX. 81 - 6 - 6614 - 7039