

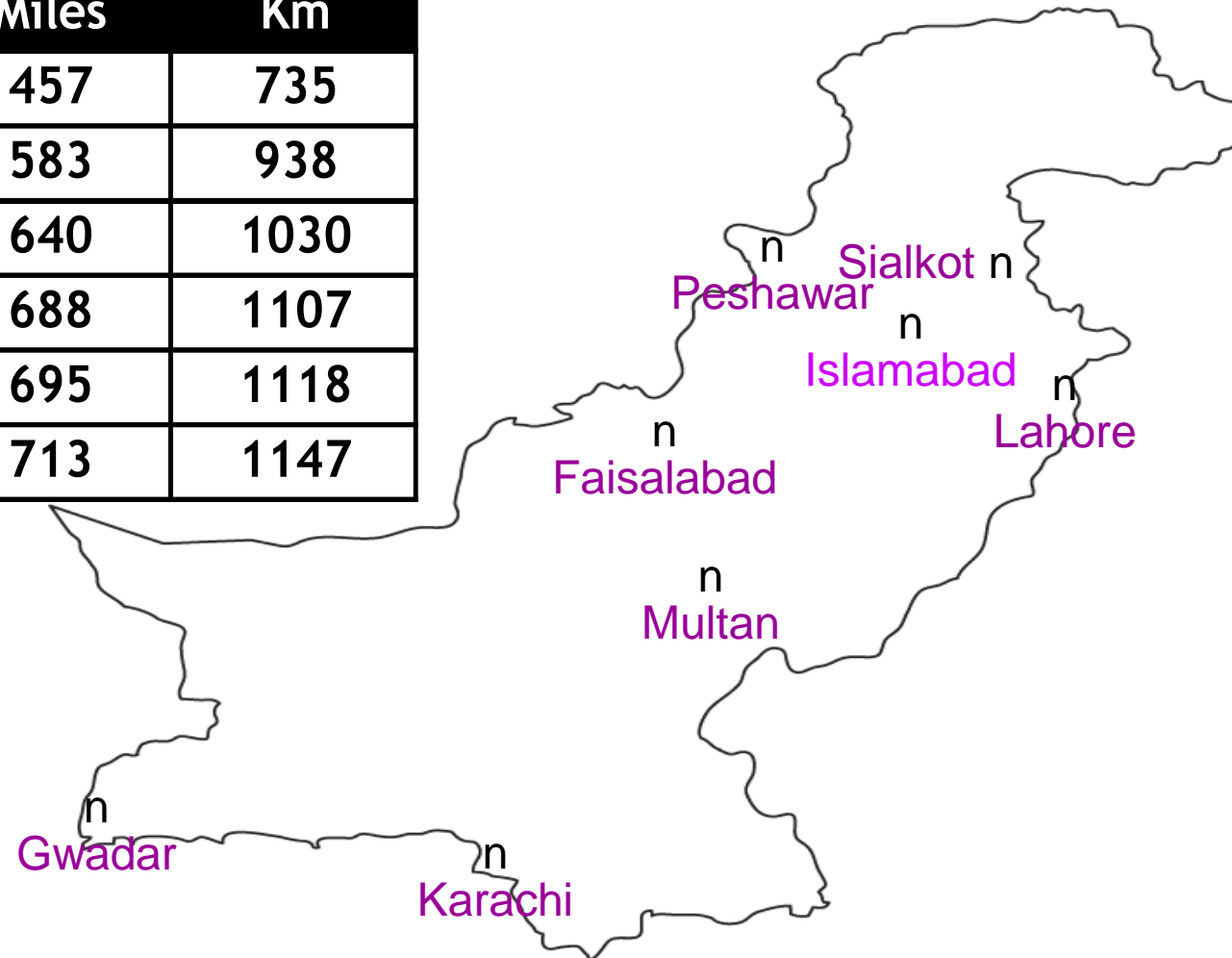


APPLE CONSOLIDATION



CITY DISTANCES

City Distance To Karachi		
City	Miles	Km
Multan	457	735
Faisalabad	583	938
Lahore	640	1030
Peshawar	688	1107
Sialkot	695	1118
Islamabad	713	1147



INTERNATIONAL AIRPORTS



JINNAH INTERNATIONAL AIRPORT KARACHI



ALLAMA IQBAL INTERNATIONAL AIRPORT LAHORE



ISLAMABAD INTERNATIONAL AIRPORT



SIALKOT INTERNATIONAL AIRPORT

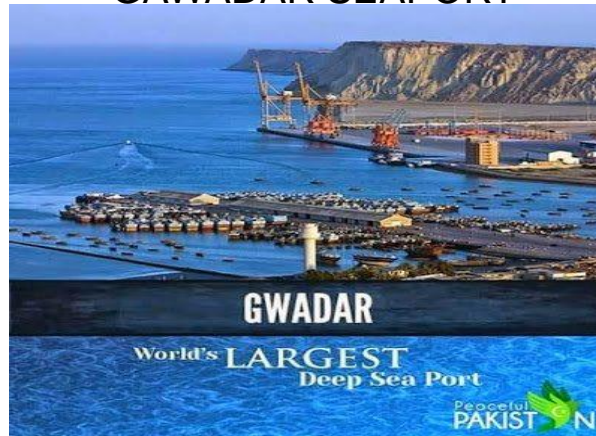


PAKISTAN SEA PORTS

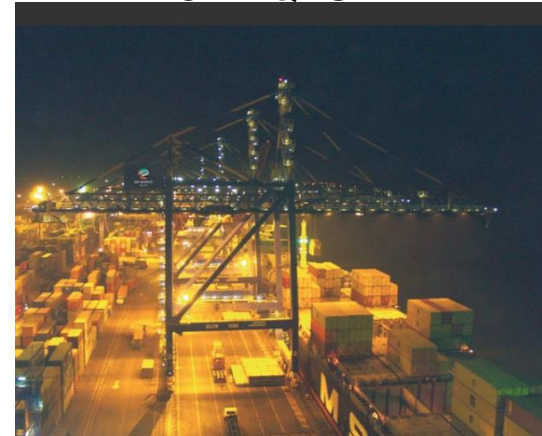
PAKISTAN INTERNATIONAL CONTAINER TERMINAL



GAWADAR SEAPORT



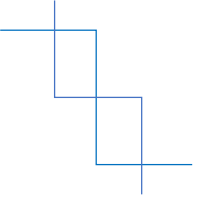
PORT QASIM



APPLE CONSOLIDATION



TERMINAL PROFILES



Karachi International Container Terminal

www.kictl.com

Operating since 1998, KICT is a 20 years BOT project, owned by Hutchison Port Holdings (HPH), a subsidiary of Hutchison Whampoa Limited of Hong Kong. The terminal has over 28 acres of bonded space including quay side, truck queuing area, gate lanes, buildings, etc.

South Asia Pakistan Terminals Limited

www.sapt.com.pk

Operating since 2017, owned by Hutchison Port Holdings (HPH), a subsidiary of Hutchison Whampoa Limited of Hong Kong. The terminal has over 28 acres of bonded space including quay side, truck queuing area, gate lanes, buildings, etc.

Qasim International Container Terminal

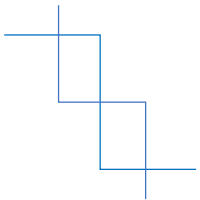
www.dpworldkarachi.com

Owned & operated by dp world, it is situated at a distance of 50 km South East of from Karachi city, Qasim International Container Terminal (QICT) is Pakistan's first Dedicated and Most Modern International Container Terminal built at Port Muhammad Bin Qasim on a Build/Own/Operate (B.O.O.) basis.

Pakistan International Container Terminal

www.pict.com.pk

Pakistan International Container Terminal, the only terminal of Pakistan solely owned & operated by a Pakistani Company, Premier Mercantile Services commenced its operations on August 9th, 2002. The Terminal now possesses dedicated Custom Facilities, Customer Services with one window facilities – including collection of KPT Wharfage dues, Operations Office & Communications Centre. c



CFS TERMINALS (EXPORTS & IMPORTS)



- Pak Shaheen International Container Terminals
- Burma Oil Mills Limited
- NLC CFS YARD
- Al Hamd International Container Terminal
- QFS (Qasim Freight Station)
- PMS Yard
- Badaruddin Yard

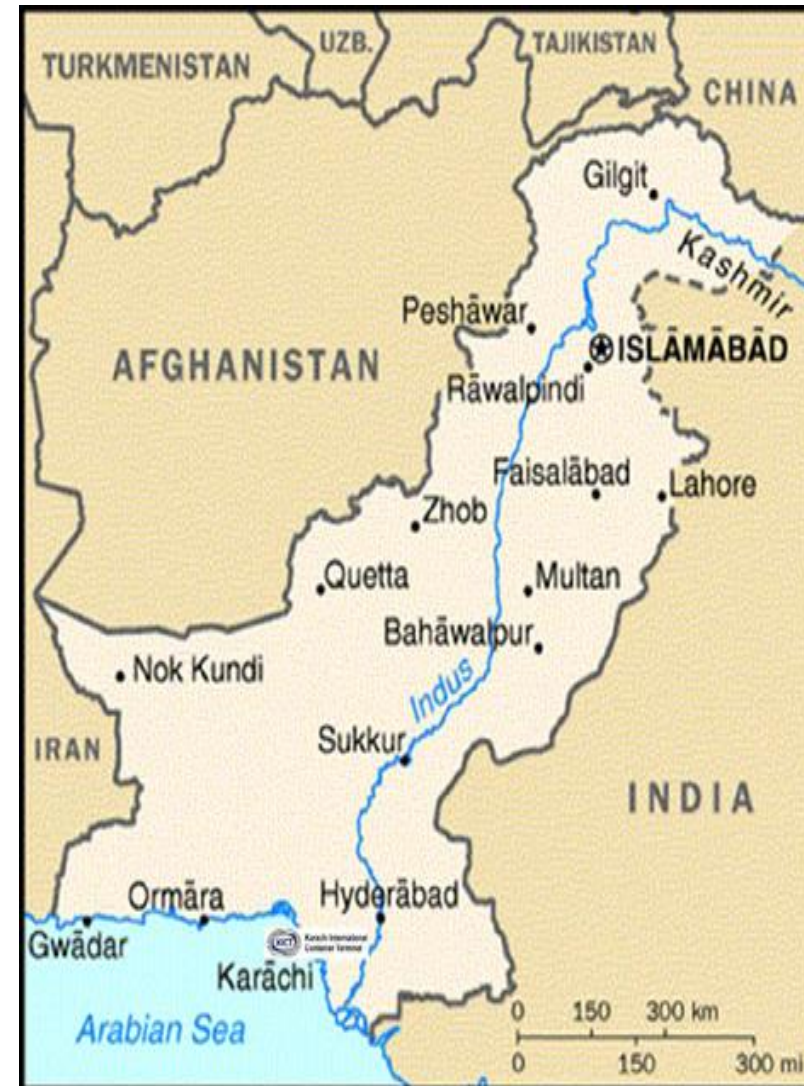
APPLE CONSOLIDATION



DRY PORT / INLAND CONTAINERS DEPOTS

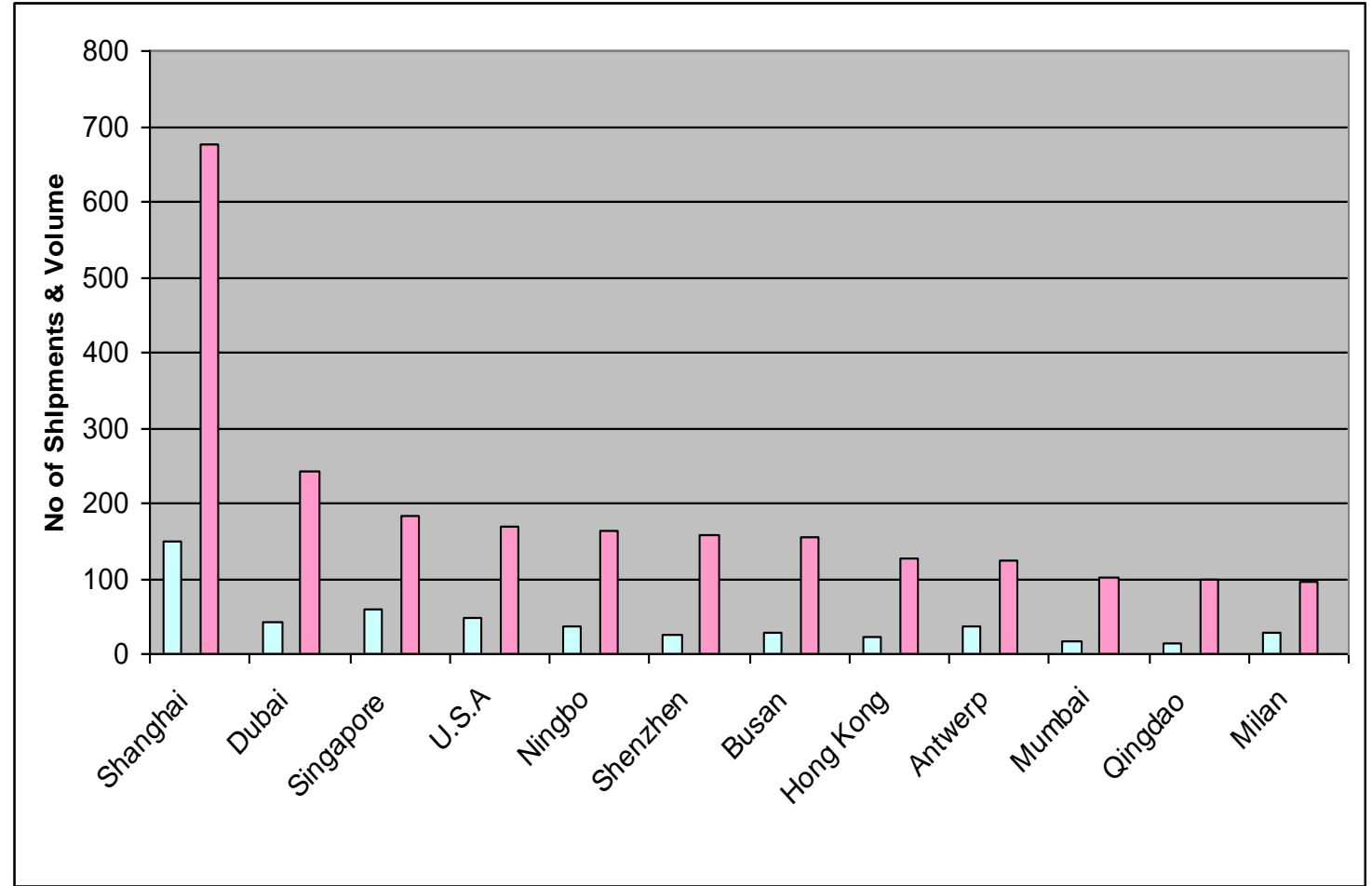
First Dry Port was established in Lahore 1973. Today Pakistan has a nine operational major dry ports across the country

- ØLahore
- ØFaisalabad
- ØSialkot
- ØMultan
- ØRawalpindi
- ØPeshawar
- ØNLC Dry Port at Lahore
- ØNLC Dry Port at Quetta

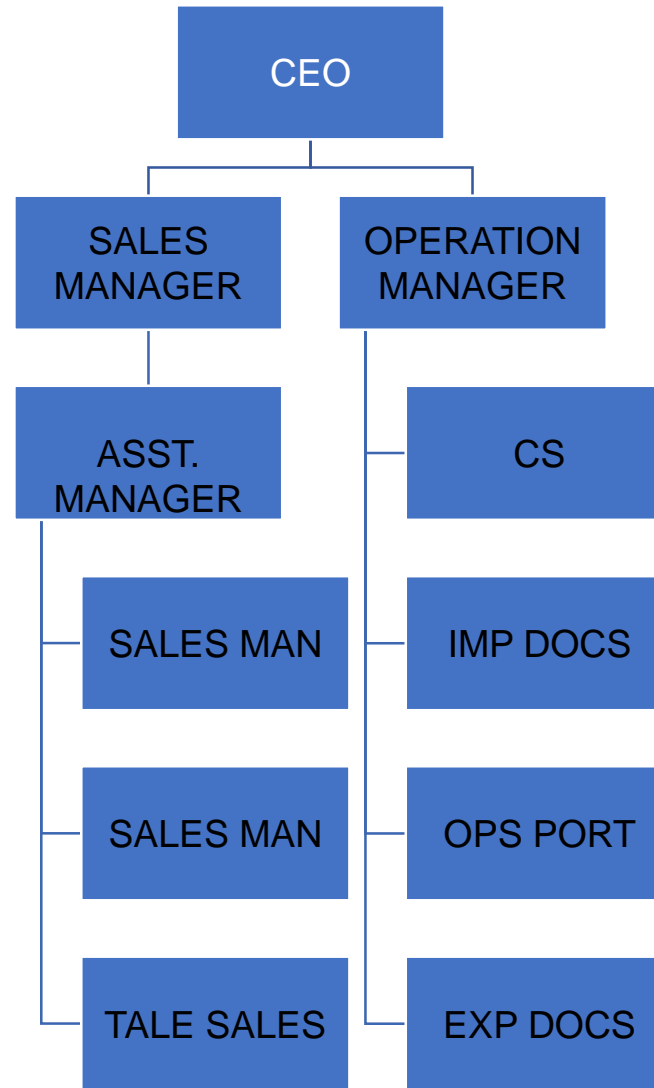


GROUPAGE IMPORTS ORIGINS & VOLUME

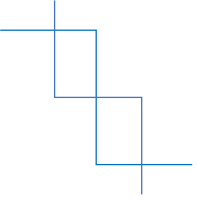
S-No	Origin	Shipments	Volume
1	Shanghai	150	676
2	Dubai	41	241
3	Singapore	59	182
4	U.S.A	48	170
5	Ningbo	37	163
6	Shenzhen	24	158
7	Busan	28	156
8	Hong Kong	23	127
9	Antwerp	36	125
10	Mumbai	18	102
11	Qingdao	14	100
12	Milan	29	96



APPLE CONSOLIDATION KARACHI ORGANOGRAM



COUNTRY AT A GLANCE



Our Target Market

Our target markets are basically every one (organizations and individual as well who have cause to move documents, goods and materials from one location to another. In other words, our target market is the whole of the Pakistan and over the world and below is a list of the people and organizations that we have plans to do business with;

Merchants and Warehouse Operators

Retailers who would want to move their goods from one locations to another

Manufacturers (Chemical manufacturers, and Textiles manufactures)

Government Organization who wants to import goods and materials from over the world.

Non – Profits and Charity organizations that have cause to move goods and materials from one location to another.

