



**SEA WAYS**  
LOGISTICS

**WELCOME TO**  
**SEA WAYS LOGISTICS**



DELHI OFFICE :

PLOT NO. B-92/1, ST. NO. 1, B-BLOCK,  
NEHRU VIHAR, MAIN KARAWAL NAGAR ROAD,  
DELHI-110094, INDIA

GST # 07ARMPG2186J1ZI , PAN # ARMPG2186J

EMAIL : MAIL@SEAWAYSIMPEX.COM



mail@seawaysimpex.com



+91-97187 67895, 0120-4154749

# Company Overview



- **Sea Ways Logistics** is a leading service provider of supply chain solutions, demonstrating core competencies in transportation services, logistics management and information technology.
- Believing that these primary service components impact every stage of the supply chain, **Sea Ways Logistics** utilizes its expertise and global infrastructure of various offices and agents worldwide to establish a competitive advantage for its customers.
- **Sea Ways Logistics** network of global professionals remain focused on streamlining processes, improving information and providing supply and demand strategies that result in profitability for our large base of local, regional and multi-national customers.



# Vision

- **Sea Ways Logistics** providing personalized customer service and supply chain solutions throughout the Company's global network.
- **Sea Ways Logistics** providing employees a safe and secure environment and an opportunity for personal and professional development in the transportation and logistics industry.



# Mission

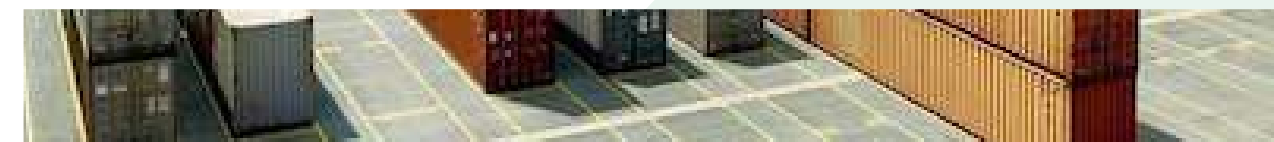
- **Sea Ways Logistics** providing foremost choice of customer within the transportation and logistics industry.
- **Sea Ways Logistics** providing the premier global provider of customized supply chain solutions by using.
- The strength of our employees,
- The flexibility of our services,
- The reliability of our resources,
- The depth of our market position.



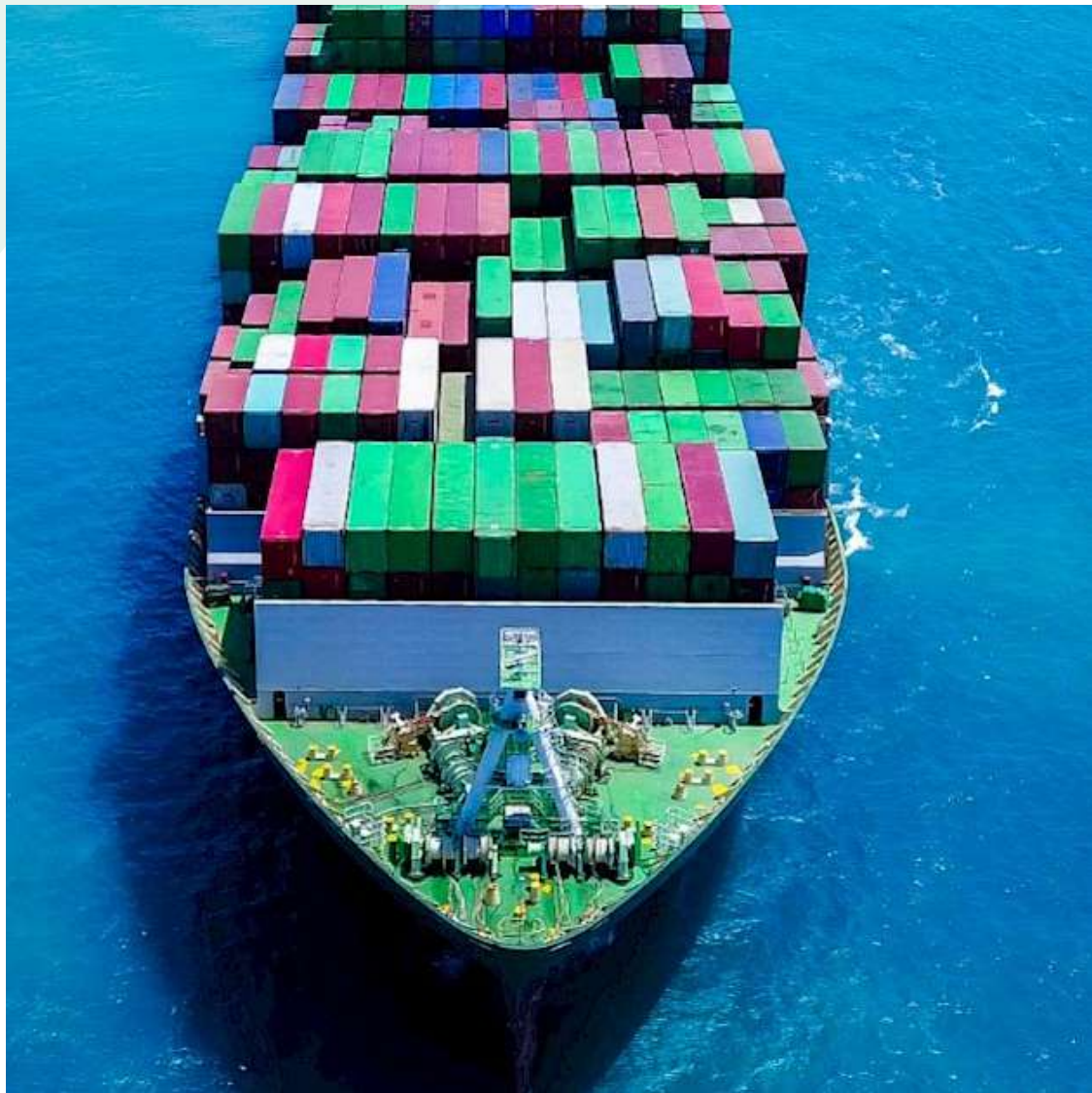


# Services Offered

- Air and Ocean Imports and Exports Services.
- Supply chain management : Warehousing,
- Door to Door Delivery.
- Export Packing and over-packing services.
- Custom Clearance.
- Bonded warehousing and trucking.
- Handling of Break-bulk shipments.
- Aircraft and Vessel chartering.



# Sea Freight (Import and Export)



- Sea Ways Logistics uses the fastest ocean going vessels, ensuring quickest possible transit times.
- LCL (Less than Container Load)
- FCL (Full Container Load)
- Import de-stuffing station.
- Inland haulage.
- Multimodal Services
- Transshipment.
- Custom Clearance.
- Logistics services.
- Projects Cargo
- Door to Door services

# Air Freight

(Import and Export)



- Sea Ways Logistics uses first class air carriers, ensuring quickest possible transit times.
- Direct Consolidation.
- Quick pick-up and delivery.
- Customs clearance.
- Import, export, transshipment.
- Express, parcel and courier.
- Door to Door services.



# Project Logistics



- Ensuring Project co-ordination & Implementation.
- Assist in Planning of cost effective operations.
- Client and Site Co-ordination.
- Efficient Handling.
- Status Updates.
- Excellent Liner Relationship.

# Customs Clearance

- Completion of all formalities relating to import and export customs clearance.
- Preparation of customs documentation.
- Advisory service in all matters relating to customs.
- Provisional calculation of all customs fees and charges.
- Support in the preparation of all documents required for customs clearance.
- Registration of the consignee with the destination customs authorities.
- Support in obtaining required certificate and licenses.
- Handling of DDP deliveries





We also facilitate cargo insurance to our customers. There are Three Basic Policies (in the Old Cargo Clauses)

- **Institute Cargo Clauses (All risks) :**

The term All Risks is misleading as not all the risks are covered. The All Risks (A.R.) is the broadest form of coverage commonly encountered in exporting. It covers all risks of physical loss or damage from any external causes irrespective of percentage.

- **Institute Cargo Clauses (With Average) :**

The With Average (W.A.) is sometimes called the With Particular Average.

In insurance parlance, the word "particular" means partial, and the word "average" means loss. The With Average (W.A.) covers partial loss. The partial loss, however, is subject to a franchise being written into the policy.

- **Institute Cargo Clauses (Free of Particular Average) :**

The Free of Particular Average (F.P.A.) is the narrowest form of coverage. It covers against total loss. It is recoverable from the insurer only when loss is specifically covered in the policy.

# Infrastructure



<b>SET-UP</b>	2015
<b>OWNERSHIP</b>	Proprietorship
<b>AREA SERVED</b>	Global Network
<b>NO OF COUNTRIES COVERED</b>	All Major Countries
<b>HEAD OFFICE</b>	New Delhi
<b>CORPORATE OFFICE</b>	New Delhi
<b>ASSOCIATE BRANCHES</b>	Mumbai, Chennai, Bangalore, Kanpur, Kolkata, Ahmadabad

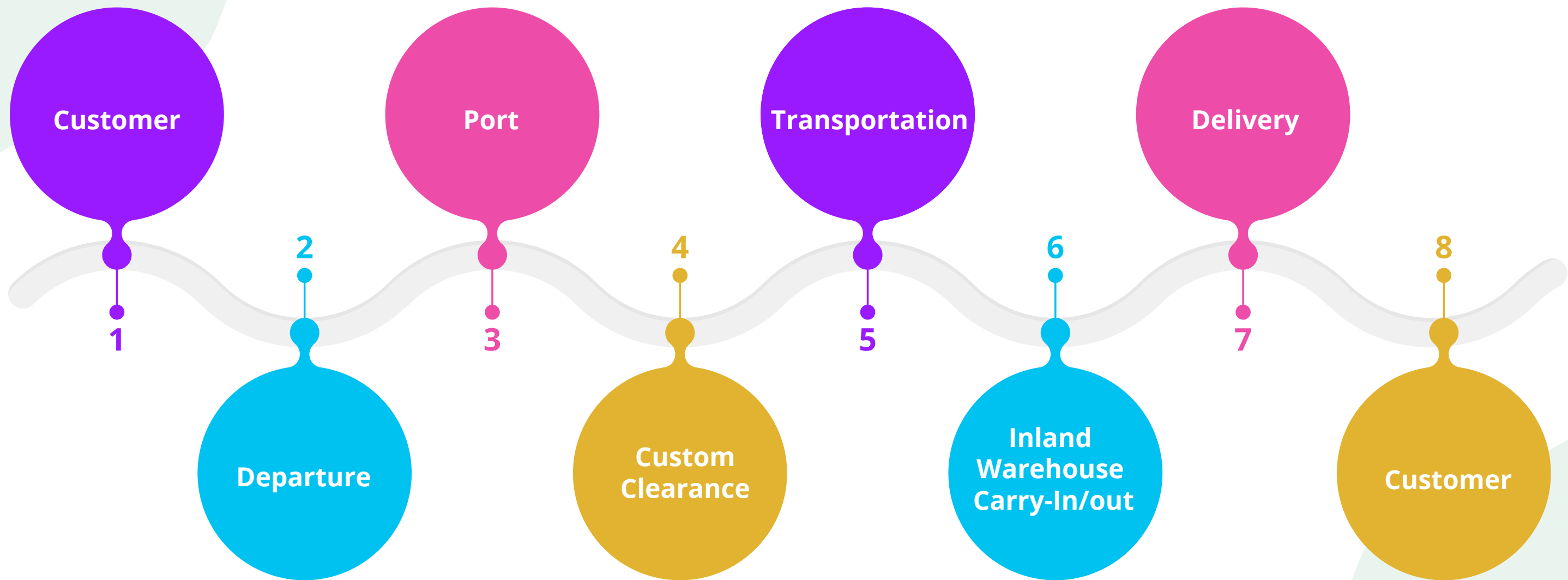
# Why Choose Sea Ways Logistics



- Lowest Handling Charges
- Total Logistics Solutions
- Fast delivery time.
- Best Transport Management.
- Ensuring for best and prompt services at Destination.
- Best place for handling DDP/DDU shipments.
- Having strong transportation network across India.









*Thank You*

SEA WAYS  
LOGISTICS