



Planet Com Trans

www.planetcomtrans.com



Planet Com Trans

Transport & Logistics

Simple efficiency !

Why Choose PLANET COM TRANS ?

As one of the Morocco's leading based supply chain management companies, we design and implement industry-leading solutions in both freight management and contract logistics.

A team of 10 persons to provide viable answers to the most challenging Shipping & Supply chain questions.

PlanetCom applies its renowned operational excellence to offer best-in-class services across its integrated worldwide network, with an equal focus on general business and on the special needs of the automotive, consumer & retail, energy, healthcare, industrial & aerospace and technology sectors.

Network agents over 1,000 locations in 160 countries. Many of the world's best-known brands count on **PlanetCom** to serve their markets, Ocean shipments

WHO WE ARE

Planet-Com designs and implements personalized transport and logistics solutions to respond to the complex challenges of the industrial sector.

Planet-Com works with partner companies in over 90 countries. And employs who deliver a comprehensive service to the highest quality standards – wherever and whenever.

2450

Shipping Transportation

1300

Cargo Container

Acting as the local representative of the principal,

Planet Com Trans provides local knowledge and expertise and ensures that the principal's requirements are performed with the utmost efficiency and dispatch.

About Us

***We take pride in serving
our customers safely.***

- Handling variety of cargo for diversified industries.
- Selection of correct carrier to ensure speedy and timely transit of the cargo.
- Dedicated multilingual employees to identify and understand customer's requirements.
- Cordial and close working relationship and rapport with Airline/Shipping lines
- Trained hard working and cohesive team of thorough professionals to provide best and efficient service.
- Commitment to quality, creativity and adaptability to integral and efficient component of our customer's sourcing and distribution needs







Planet Com Trans

www.planetcomtrans.com



Our Mission

Provide Service for our customer

Provide professionally managed “ One Stop True Global Logistics Solutions” with reliability/commitment/ dedication to maintain and enhance the quality of services at realistic costs under one roof with prime focus on satisfied customers.

Planet Com Trans ,is one of the leading shipping company in Morocco, offers an excellent shipping services to our customers in all Moroccan ports by a skilled professionals .



Your cargo is safe on our hands



Excellence operational and up-to-the-minute information through to our talented staff.

www.planetcomtrans.com



Planet Com Trans
www.planetcomtrans.com

Our Services



Transportation

Planet-Com aims to provide its customers with the best one-stop-shopping solutions in relationship with its ocean freight or air freight services.



Packing

At **Planet-Com**, we feel that getting your shipment delivered safely is as important as getting it there on time. That is why we offer expert packing solutions for your precious cargo.



Logistics

Planet-Com combines value-added services in Logistics and unique Logistics Manufacturing Services (LMS) to help customers maximize their profits and stay ahead of competition.



Shipping Agency

covers the handing over or delivery of an object to a person's care. In shipping terminology
Handing over of a vessel into the care of an agent



Project Cargo

If you have complicated or heavy equipment to transport, **Planet-Com** will rise to the challenge. We thrive under pressure and have handled many high-value, transportation projects on tight deadlines.



Collecting

Planet-Com transports heavy construction machinery and supports large projects around the world by, for example, transporting 3,000 ton modules by sea.



Planet Com Trans
www.planetcomtrans.com

Transportation

Ocean Freight



Planet-Com offers worldwide ocean freight transport solutions, both for import and export and for every type of shipments, also for dangerous goods. Dedicated contact persons will organize your shipments in container or conventionally/in break bulk. Our extended global network in more than 90 countries enables us to provide local assistance in all parts of the supply chain FCL, LCL, Is tank container, Flat Racks/Open top Container, flexitank Container.

Air Freight



We have extensive experience in air freight operations with all parts of the world. Door to door service, special Cargo Service, express/standard courier, fair logistics

Road Freight



Door to door service, special Cargo Service, express/standard courier, fair logistics
Transit customs & route. Approvals Permits/escorts/ Surveys Etc

Customs clearance



We assist you in all your customs clearance procedure to facilitate the transportation of your cargo

Project Cargo



Project cargo describes the domestic or international transportation of large, heavy-duty, high value, or complex pieces of equipment. The materials included in project cargo can be globally sourced, or from one specific location

Warehouse



Warehousing, and stock Management, Palletization, Packaging and re-packaging, Labeling & quality control.



Planet Com Trans

www.planetcomtrans.com

Mission

Planet-Com is a service provider dedicated to building long-term relationships with customers, staff and suppliers. We are committed to delivering integrated services to the Shipping, Logistics, Marine and related markets at the highest levels of quality and safety.

- Ensuring a berth for the incoming ship
- Arranging for the pilot and the tugs if necessary
- Drawing up the documents for the customs and harbour services
- Arranging for the necessary ship fresh water / provisions
- Arranging for the necessary doctor for the crew for any medical assistance
- Arranging for storage bunkers if these are needed
- Arranging for necessary repairs
- Conveying instructions to and from the ship owner
- Organizing the supply, transport and the handling of the goods
- Organizing the necessary contacts with the stevedores
- Collecting freights, cargoes
- Contacting shippers and the receivers of the goods

Ship Agency

Vision

To provide leadership and innovation in global business and community life by delivering a flexible portfolio of services built on quality, safety, honesty, vigour and a commitment to long term business relationships.

Core value

Passionate about service

Galene Agencies continually strives for service excellence, setting industry benchmarks to ensure we always exceed expectations.

Dedicated to clients

Our clients come first. We tailor our offerings to fulfil our clients' needs, going above and beyond the call of duty on a regular basis to guarantee complete client satisfaction.

Consistent in service delivery

We deliver quality worldwide. We have implemented quality assurance initiatives to ensure that clients constantly receive the same service excellence and that all staff consistently operate to the same high standards.

Project Cargo – Break bulk Shipment

Designing advanced project logistics requires flexibility, specific knowledge and a true passion to find solutions to the challenges that arise. And our people have the skills and the determination to do whatever is needed to Work on a contingency plan & constant improvement

Once all plans are in place, it's time to begin transporting the product. Every country has different protocols when it comes to customs compliance, paper work, duties, exemptions, authorizations, and other considerations that must be followed. Typically, Planet com Trans could assist firms with all the regulatory considerations and budgeting process, as well as providing insights into the shipment design, packaging, routing options, and appropriate choices for final delivery. The execution of project cargo transportation should be just as comprehensive as the pre-planning stage. Based on transit times and other factors, Planet Com Trans will meticulously execute the detailed plans while maintaining liability, constant communication, and overall transparency.

break bulk shipments, that can move by land, sea, or air. This process involves single or multiple shipments with the help of cranes, trucks, rail, planes, and ships. Furthermore, project cargo tends to have a specific time-frame or specified delivery date that makes these shipments some of the most complex and detailed projects in the entire logistics industry.



Logistics & Supply Chain

Add value at every stage of the supply chain

Your supply chain is constantly evolving, and as logistics experts, we know that. Just as we know that the key to your success lies in the effectiveness of the solutions provided to you.

We look to the future, which is why we forge strong, long-term partnerships. We support our clients by drawing on our international expertise and our local know-how. Together, we meet the challenges of their supply chain and we identify their growth opportunities.

We observe the evolution of their needs to simply imagine the best logistics solutions.

Our skills span across major sectors: automotive, retail, energy, healthcare, technology, industry and aerospace. We support businesses of all types, regardless of their size.



CONTAINER CARGO

Special Shipments require special solutions

Container Cargo –Shipment

Planet Com Trans is a leading forwarder and shipping agent specialized in Containers shipments.

Our team is composed by skilled professionals able to provide a multipurpose tasks operations, back office, finance and sales as they are in position to get in contact on daily basis with all local importers and exporter as well as shipping lines....

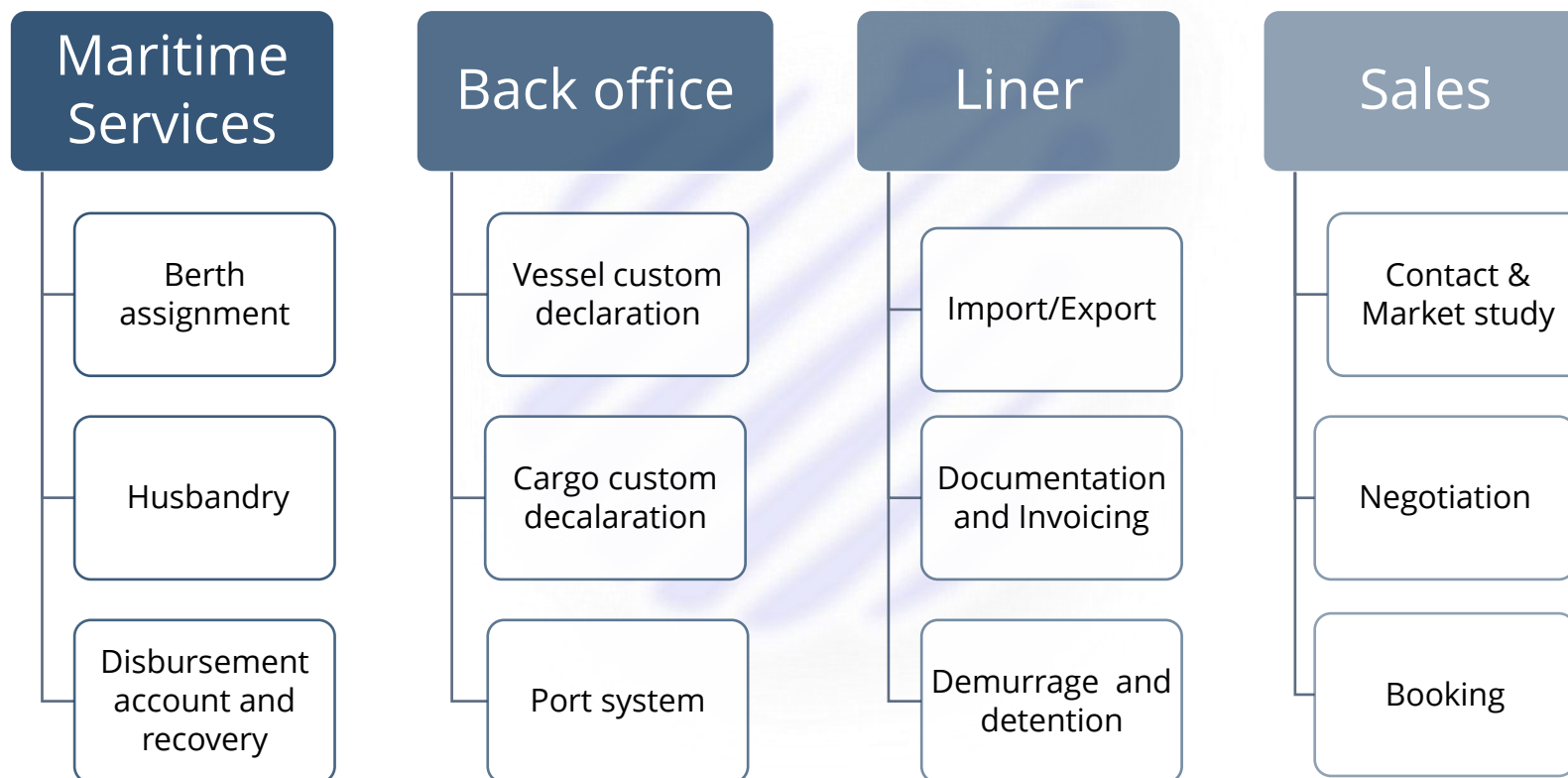




CONTAINER CARGO

Special Shipments require special solutions

Containers–Shipment





Planet Com Trans
www.planetcomtrans.com

CASABLANCA RESTRICTIONS

Special Shipments require special solutions

Containers –Shipment

Port name: Casablanca

Port location : MACAS

Anchorage : 33°36'05" N,7°36'52" O

Pilot Station : VHF 12

Terminals names : TCE & TC3

Maximum draft at Berth : 12,5 Mtrs

N° on berths : 7

Nbr of gantry cranes : 7

Nbr of Straddle : 42

Reefer plugs : 400

Productivity (moves/crane/Hour) : 30 MPH

Terminals working Hours : 24H/7 under 3 working shifts

Security Level : 1

Terminals operator name : Marsa Maroc

Container Yard : 700 000 TEU

Berthing is subject to first arrived first served (no windows)



TCE : 4 Piers (70-71-72-73-74)

TC3 : 3 Piers (80-81-82-83)

Casablanca Volume

Container activity in Casablanca port reached 1,106,000 TEU in 2021, up 3.8% compared to 2020.

In tonnage, this activity marked a slight increase of 1.4% with a volume of 12.3 million tons.

Exports recorded an increase of 1.8% with a volume of 526,922 TEU.

Empty containers for export showed a volume of 316,102 TEU (+1.5%), thus representing 60% of the global container traffic for export.

Imports reached 529,667 teu, up 2% compared to 2020.

Cabotage activity experienced a notable increase of 13.9% with a volume of 230,540 TEUs

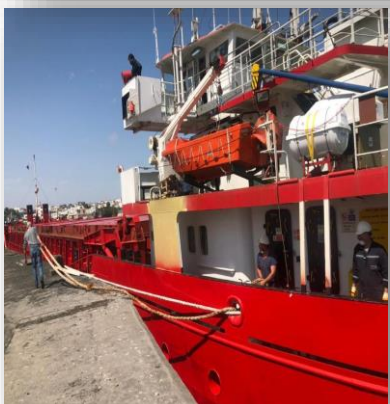
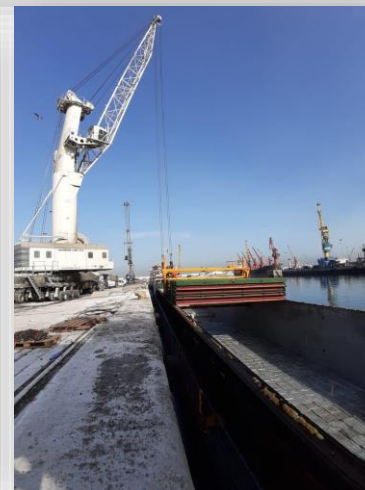


Visit the Office





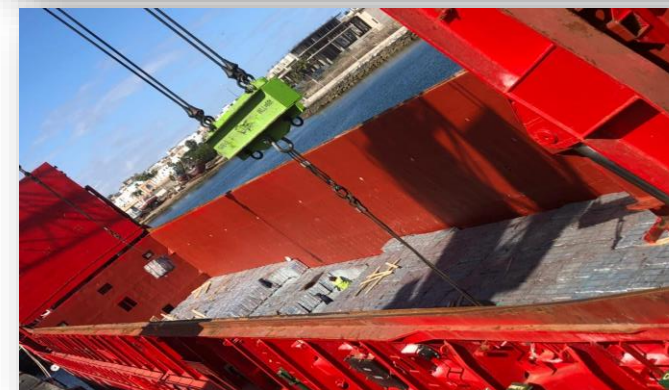
Planet Com Trans
www.planetcomtrans.com



Our Gallery

Perfect Company With Perfect Solutions

Planet-Com designs and implements personalized transport and logistics solutions to respond to the complex challenges of the industrial sector.



www.planetcomtrans.com



Planet Com Trans

www.planetcomtrans.com

Worldwide Agents Network

“ *Connect with
the world here.* ”

From a small agency, PlanetCom has been able to develop a worldwide network through its customer relations and the perseverance of its team, we are currently connected with the whole world through the most important network of shipping agents which allows us to be more and more competitive on the market





Planet Com Trans
www.planetcomtrans.com



Automotive



Healthcare



Consumer & Retail



Energy & Project



Industry & Aero



Technology



eCommerce

Country Profile

Capital:	Rabat
Borders:	Algeria, Mauritania
Area:	710,850 sq KM
Population:	36,472,000
Language:	Arabic, French, Berber, English
GDP:	\$ 332.358 billion
Currency:	Moroccan Dirham (MAD)
Time Zone:	UTC + 1
Dialing Code:	+ 212

Morocco Services

Planet Com Trans offer a comprehensive range of freight management and contract logistics services, to companies operating in various industries.



PlanetCom offices in **Casablanca** and **Tangier**



Main airport in **Casablanca** - Mohammed V Intl. airport



Main ports in **Casablanca**, **Agadir** and **Tangier**



Planet Com Trans
www.planetcomtrans.com

Our Partners

Morocco References Brands

RETAIL



AUTOMOTIVE & TIRES



OIL / GAS & AEROSPACE



INDUSTRY & TECHNOLOGY





Planet Com Trans

www.planetcomtrans.com

Contact Us

Get in touch with us



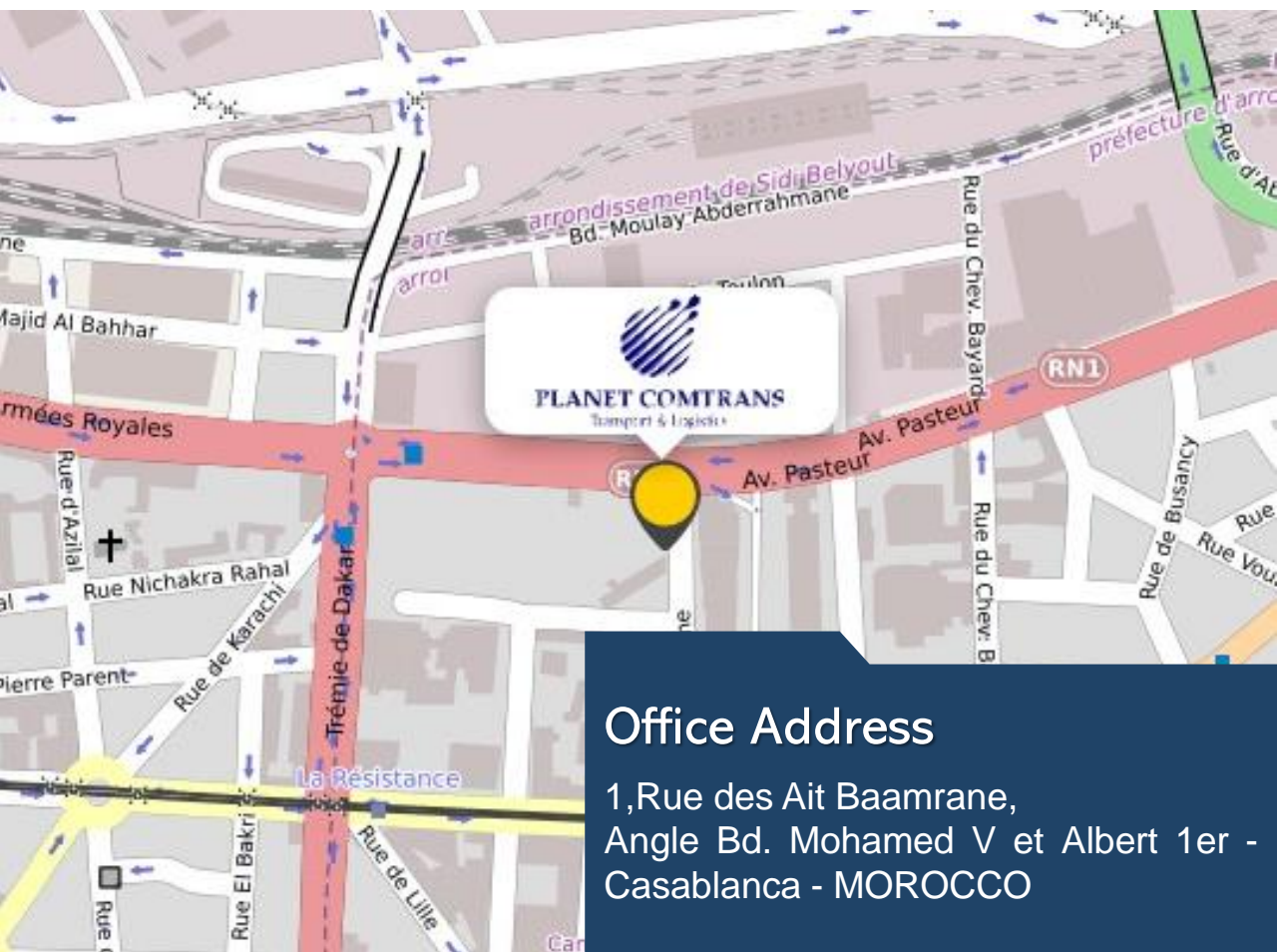
(+212) 05 22 24 22 37



management@planetcomtrans.com



www.planetcomtrans.com



Office Address

1, Rue des Ait Baamrane,
Angle Bd. Mohamed V et Albert 1er -
Casablanca - MOROCCO



PLANET COMTRANS

Transport & Logistics