




*We are a global logistics company
who provides professional services.*



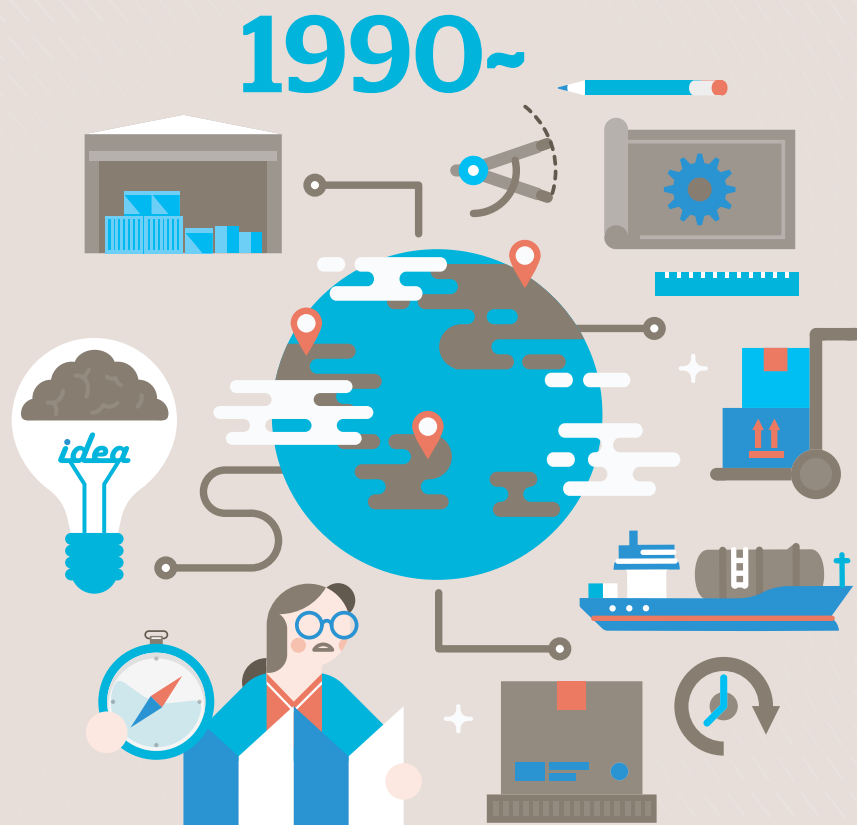
Since its founding in 1990 in the United States, A.I.F. has become an exceptional global logistics company which provides diversified services including freight forwarding and warehousing service with customs clearance at the most essential gateways of world logistics in Germany, Italy, France and Japan.

CONTENTS

A.I.F. Introduction
Our History
Worldwide Network

Atlantic Integrated Freight GmbH
Atlantic Integrated Freight S.R.L.
Atlantic Integrated Freight SARL
Allstate Int'l Freight USA, Inc.
A.I.F. Company Japan
A.I.F. Company China

Our Service
Customized High Quality Service



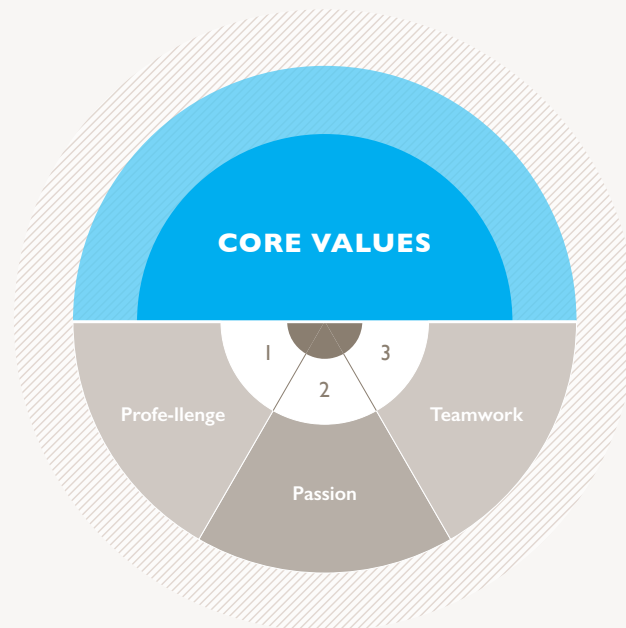
Since 1990, Innovative Global Logistics Company

Since its founding in 1990 in the United States, A.I.F. has become an exceptional global logistics company which provides diversified services including freight forwarding and warehousing service with customs clearance at the most essential gateways of world logistics in Germany, Italy, France and Japan.

The core values of A.I.F. are found in professionalism, innovation, passion and teamwork. A.I.F. is taking the initiative in fulfilling its core values based on regional expertise, an unrelenting dedication to efficiency, innovation and satisfaction for our customers.

Mission

As your trusted partner, A.I.F. grows with its customers through challenge and innovation.



Profe-llenge

- Perform and deliver with the utmost professionalism.
- Pursue new endeavors and strive to attempt the impossible without hesitation.

Passion

- Approach our work with pride and enthusiasm.
- Be committed to achieving our goals and producing successful results.

Teamwork

- Promote an environment of knowledge exchange and collaboration.
- Tackle difficult situations through effective communication and cooperation.

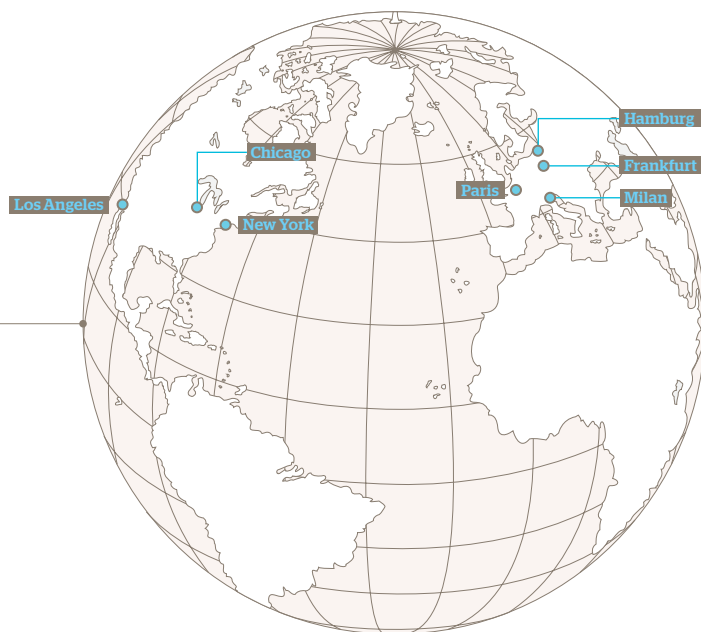
Vision

To be a global logistics player by providing professional services.

A.I.F. History

| | | |
|------|---|------------------------------------------------------------------------------------------------------------------------------------------------------------------------------------------------------------------------------------------------------------------------------------------------|
| 2019 | ↑ | • Nordic Service launch |
| 2016 | ■ | • WCA Conference participation |
| 2015 | ■ | • WCA Conference participation Los Angeles, Chicago and New York branch registered as a member of WCA |
| 2013 | ■ | • Open Beijing Liaison Office |
| 2012 | ■ | • Promoting professionalism through changing the company name. • JAPAN : A.I.F. Company Japan • EUROPE : Atlantic Integrated Freight • USA : Allstate Int'l Freight USA, Inc. • Open Shanghai Liaison Office Germany, Italy, France and Japan branch registered as a member of WCA |
| 2010 | ■ | • France branch merged with TRICONTINENTAL CARGO S.A.S. |
| 2009 | ■ | • Italy branch obtains IATA License |
| 2007 | ■ | • Open Osaka branch • Open Paris branch |
| 2005 | ■ | • Open Tokyo branch • Open Hamburg branch |
| 2003 | ■ | • Open Milan branch |
| 2001 | ■ | • Open Frankfurt branch |
| 1996 | ■ | • Open Chicago branch |
| 1995 | ■ | • Licensed as a member of IATA |
| 1994 | ■ | • Open New York branch |
| 1990 | ■ | • A.I.F. founded in Los Angeles, California • Registered as NVOCC & Freight Forwarder at FMC (Federal Maritime Committee, USA) |

Worldwide Network



USA

Los Angeles

1250 W. Artesia Blvd.
Compton, CA 90220, USA
t +1 310 323 0700
f +1 310 323 0701

Chicago

371 Haynes Drive
Wood Dale, IL 60191, USA
t +1 630 496 0600
f +1 630 496 0300

New York

179-22 149th Rd.
Jamaica, NY 11434, USA
t +1 718 553 5300
f +1 718 553 5370

GERMANY

Frankfurt

Am Prime Parc 13,
65479 Raunheim, Germany
t +49 6142 6037 0
f +49 6142 6037 280

Hamburg

Frankenstr. 3,
20097 Hamburg, Germany
t +49 40 548 046 0
f +49 40 548 046 19

FRANCE

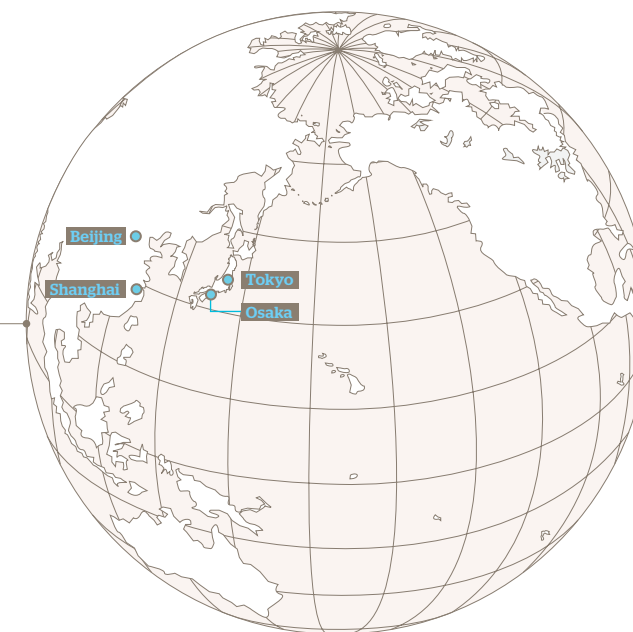
Paris

Zac Entree Sud De Gonesse
1, Rue Jean Mermoz
95500 Gonesse, France
t +33 1 3011 5069
f +33 1 3988 5923

ITALY

Milan

Via Giuseppe Di Vittorio 4,
20050 Liscate (MI), Italy
t +39 02 958 7759



CHINA

Shanghai Liaison Office

Room 608, Shanghai Trade Square,
188 Siping Road, Shanghai, China
t +86 21 5642 5206
f +86 21 5642 5103

Beijing Liaison Office

Room 608, Building No.2,
Hesheng Qilinshe, Intersection of
Futong West Street and Wangjing Road,
Chaoyang District, Beijing, China
t +86 10 5738 9600

JAPAN

Tokyo

7F Halifax Shiba Bldg.,
1-3-10 Shibakoen, Minato-Ku,
Tokyo 105-0011, Japan
t +81 3 6435 7440
f +81 3 6435 7442

Osaka

8F Honmachi Collabo Bldg.,
4-4-2 Kitakyuhojimachi,
Chuo-Ku, Osaka 541-0057, Japan
t +81 6 6120 2002
f +81 6 6120 2121

Atlantic Integrated Freight GmbH



Frankfurt

Am Prime Parc 13,
65479 Raunheim, Germany
Tel. +49 6142 6037 0
Fax. + 49 6142 6037 280

Hamburg

Frankenstr. 3,
20097 Hamburg, Germany
Tel. +49 40 548 046 0
Fax. +49 40 548 046 19

Warehouse Facilities

Total Area : 6,000 sqm
Facilities : 25 Trailer Docks, 15 Fork Lifts, 3 Level Rack System,
Sorting & Packing Facilities, 24 Hours Digital Monitoring System,
High Value Secured Caged Area, 2 X-Ray Machines for Unknown Shipper

Warehouse Facilities

Inside

Indoor Operating Area: 26,000 sqm
Separate Areas for Import and Export, LCL Freight, Dangerous Goods
Covered Loading Bays for Trucks

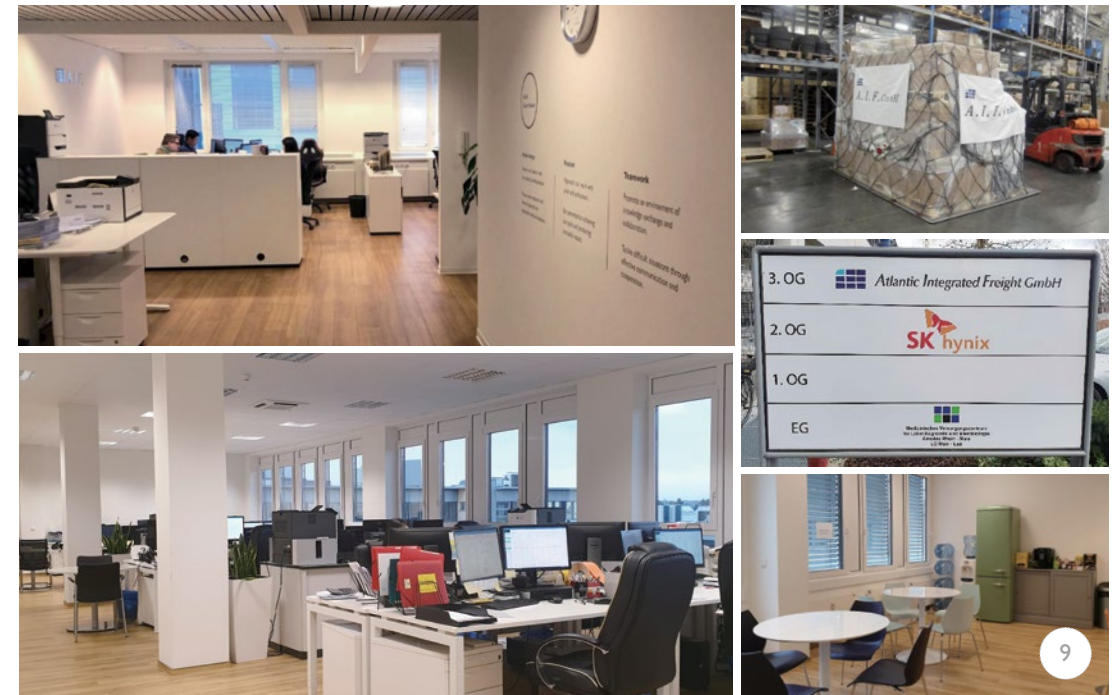
Outside

Outdoor Operating Area: 60,000 sqm, Storage for 6,000 TEU
Service Facilities, Container Depot, Container Fumigation



Competitiveness powered by professionalism, A.I.F. Germany

Ever since the opening of the first European office, Atlantic Integrated Freight GmbH has been the pinnacle of professionalism and exploration for continual growth. Atlantic Integrated Freight GmbH has ranked as one of the top performers in Korea-bound air export volume. In 2004 the Hamburg branch launched to handle FAK consol, heavy cargo and project forwarding. Since then it has successfully completed numerous projects. The successful completion of a large-scale project in Poland in 2004 gave us valuable first hand experience of Eastern European logistics networks. We continually work toward becoming a major force in the European market in terms of ability and competitiveness. Atlantic Integrated Freight GmbH is continuously growing its knowledge of the European market and regional nuances while striving to develop into one of the world's leading logistics companies.



Atlantic Integrated Freight S.R.L.



Milan

Via Giuseppe Di Vittorio 4,
20050 Liscate (MI), Italy
Tel. +39 02 958 7759

Warehouse Facilities

Location : 1 Second Easy Access from the Office to the Warehouse
Total Area : 3,000 sqm
Facilities : 4 Fork Lifts, 2 Electric Pallet Jacks,
4 Trailer Docks Palletization Ramp,
24 Hours Digital Monitoring System, On-Site Security Surveillance



Stand out in the European market, A.I.F. Italy

Atlantic Integrated Freight S.R.L. arrived in Italy with a dream and a vision of providing the best logistics solutions, and we are grateful for the support and encouragement you have given us. We realize that without your support we would not be here today, and we feel that working to provide you with the finest logistics services is the least we can do.

The logistics industry is constantly changing at a fast pace and firms in the industry face stiff competition. This means that no firm has a guaranteed future. Yet, Atlantic Integrated Freight S.R.L. has overcome countless obstacles and challenges by adapting to the market changes.

Our honest efforts have given us a rightful in this highly competitive industry. The key to our performance in these conditions was to listen to our clients and work with them to deliver on their needs. We will continue to put our clients' interests first and work in order to provide a service that is ahead of the field. We hope for continued support in the future.



Atlantic Integrated Freight SARL



Paris

Zac Entree Sud De Gonesse
1, Rue Jean Mermoz
95500 Gonesse, France
Tel. +33 1 3011 5069
Fax. +33 1 3988 5923

Warehouse Facilities

Location : 1 Second Easy Access from the Office to the Warehouse
Office Total Area : 395 sqm
Warehouse Total Area : 884 sqm
Facilities : 2 Fork lifts
1 General warehouse door & 1 DOCK
24 Hours Security Surveillance

Introducing new perspectives on logistics, A.I.F. France

A.I.F. launched A.I.F. France by opening the Paris branch in November of 2007. Always driven by passion and never turning down a challenge, the opening of the Paris branch was no exception. This branch enhanced our European network and provided a better infrastructure enabling us to provide improved service in Europe. Based on many years of accumulated knowledge in European transportation, A.I.F. France has acquired Tricontinental Cargo S.A.S. in 2010 to offer a new level of logistics service.

We are devoted to helping our partners create value through effective and innovative supply chain management solutions.

We are grateful for the encouragement and trust from our customers and we will continue to exceed your highest expectations.



Allstate Int'l Freight USA, Inc.



Los Angeles

1250 W. Artesia Blvd.
Compton, CA 90220, USA
Tel. +1 310 323 0700
Fax. +1 310 323 0701

Warehouse Facilities

Location : Office & Warehouse are in 1st floor
Total Area : 15,000 sqf
Facilities : 3 Trailer Docks, 1 Ground Dock,
2 Forklifts(5,000 lbs Scale), 24 Hours Digital Surveillance System

Chicago

371 Haynes Drive
Wood Dale, IL 60191, USA
Tel. +1 630 496 0600
Fax. +1 630 496 0300

Warehouse Facilities

Location : Office & Warehouse are in 1st floor
Total Area : 10,000 sqf
Facilities : 2 Trailer Docks, 1 Ground Dock,
2 Forklifts(5,000 lbs Scale), 24 Hours Digital Surveillance System

New York

179-22 149th Rd.
Jamaica, NY 11434, USA
Tel. +1 718 553 5300
Fax. +1 718 553 5370

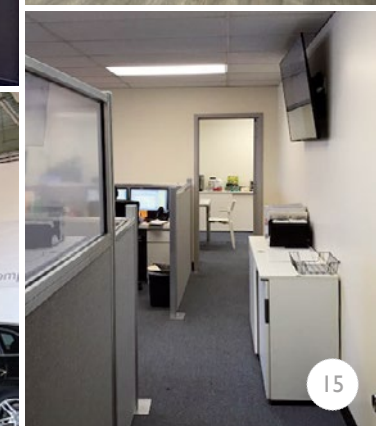
Warehouse Facilities

Location : Warehouse in 1st floor; Office in 2nd floor
Total Area : 11,200 sqf
Facilities : 2 Trailer Docks, 1 Ground Dock,
2 Forklifts(5,000 lbs Scale), 24 Hours Digital Surveillance System

Prospering alongside our clients, A.I.F. USA

A.I.F. USA began its journey in August of 1990 in Los Angeles, California. Since then, the company has expanded into other major USA cities such as New York and Chicago. We have built a strong foundation as a logistics service provider in the world's largest economy.

Over the years A.I.F. USA has provided a unique service to its customers through advanced logistics systems and a professional staff. As for the future, A.I.F. USA will continue to offer superior and competitive service to our customers. Our mission is to help our clients create value in their businesses through efficient logistics solutions.



A.I.F. Company Japan



Tokyo

7F Halifax Shiba Bldg.,
1-3-10 Shibakoen, Minato-Ku,
Tokyo 105-0011, Japan
Tel. +81 3 6435 7440
Fax. +81 3 6435 7442

Warehouse Facilities

Total Area : 3,422 sqm
Facilities : 3,000 Ton Scale, 17 Fork Lifts, 4 Level Rack System,
17 Trucks, Sorting & Packing Facilities,
24 Hours Digital Monitoring System

Osaka

8F Honmachi Collabo Bldg.,
4-4-2 Kitakyuhojimachi, Chuo-Ku,
Osaka 541-0057, Japan
Tel. +81 6 6120 2002
Fax. +81 6 6120 2121

Warehouse Facilities

Total Area : 4,577 sqm
Facilities : 12,000 Ton Scale, 8 Fork Lifts, 4 Level Rack System,
Sorting & Packing Facilities, 24 Hours Digital Monitoring System

Your dependable confidant, A.I.F. Company Japan

In 2005, A.I.F. Japan launched Tokyo branch. The second largest trade nation in the world, Japan is well known for its high quality standards and having a thorough system of operations. A.I.F. Japan is steadily expanding operations with offices in Tokyo and Osaka. With our expeditious attainment of the IATA license, a Consolidator license and a Regulated Agent license, A.I.F. Japan has quickly developed into a trusted name in the industry. We are building a reliable and efficient network through its close relations with various partners in the transportation industry. Offering twice-weekly FAK consol service from Osaka, we have a proven record in bulk and project cargo. This has led A.I.F. Japan to become a trusted business partner in the region. We are comprised of experienced professionals who possess a wealth of local knowledge as well as a clear understanding of Korean affairs, armed with a fully computerized system allowing for efficient project management. This effective combination allows us to provide our customers with a highly customized solution that is second to none.



A.I.F. Company China



Shanghai Liaison Office

Room 608, Shanghai Trade Square,
188 Siping Road, Shanghai, China
Tel. +86 21 5642 5206
Fax. +86 21 5642 5103

Beijing Liaison Office

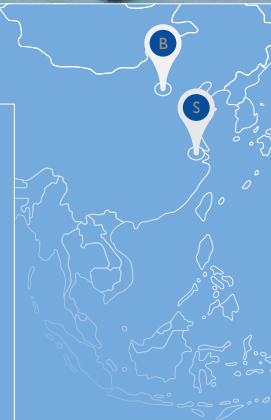
Room 608, Building No.2, Hesheng
Qilinshe, Intersection of Futong West
Street and Wangjing Road, Chaoyang
District, Beijing, China
Tel. +86 10 5738 9600

BUSINESS ROLE

We are here to support
your real demands and
resolve inconvenience
for your import

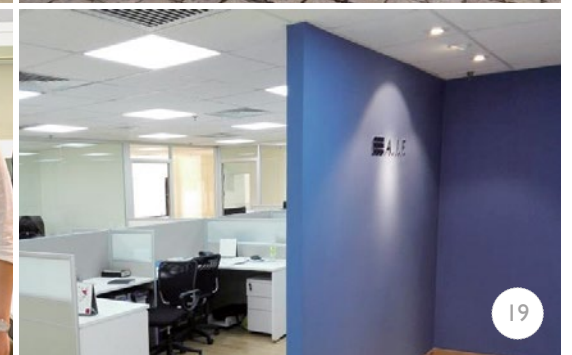
SERVICE SCOPE

- Visit & Counselling for your cargo
- Coordination & Support your freight
- Financial Management
- No Operation Function



A.I.F. has implemented another business aspect by providing AIR / OCEAN export services from each branch to a Chinese destination.

China is one of the most logistically active and influential nations in the world. As A.I.F. has experienced significant structural growth over the years in U.S., Europe, and Japan, we have implemented another business aspect by providing air / ocean export services from each branch to a Chinese destination. A.I.F. has opened liaison offices in Shanghai, Beijing and Shenzhen to deal with increasing Chinese customers' inquiries in real time. A.I.F. China Liaison offices are composed of numerous experts who own various field experiences to furnish coordination support service in helping and resolving any communication problems between branch offices and local customers.





Ocean Freight

From the smallest shipment possible to the most sophisticated cargo, A.I.F. provides reliable ocean transportation service for our customer's various demands.

- Conventional cargo | ·Containerized cargo
- Break bulk cargo

Air Freight

A.I.F. provides various air transportation service options with emphasis on quality and timeliness.

- Air cargo service | ·Consolidation | ·Charters

Warehousing & Customs Clearance

Our multipurpose cool & dry warehouses are suitable for a wide variety of products. Strategically located, we serve a number of consumer markets. Value added services including documentation, inventory reports, packaging, co-packaging and distribution are offered to clients.

Land Transportation

Our services are customized to fit your needs and offer the most competitive rates.

- Timely pick-up | ·Door-to-door service
- Flexible and efficient transport to and from port
- An extensive network of transportation providers
- Efficient single point of contact

Projects & Exhibitions

Our skilled teams are ready to handle any projects and exhibition requirements. With years of experience handling various projects and heavy lift cargo, A.I.F. can overcome any hurdles that we encounter during these intricate projects.

Industry Solutions

A.I.F. understands our customer's specific needs and provides customizable logistics solutions.

- Automotive | ·Chemical | ·Consumer and Retail
- Electronics | ·Fashion | ·High-tech | ·Manufacturing
- Oil and Gas | ·Pharma and Healthcare
- Telecommunications

Customized High Quality Service

1.

Quick and Precise Quotation Service

**BEST
PRICE**

We offer competitive rates to customers in KOREA & CHINA to grow together with quick and precise quotation. And we keep research to analysis market price and more competitive buying rate with integrated quotation management.

FOR CHINA CUSTOMER

qt.germany1@atlanticif.com
qt.italy1@atlanticif.com
qt.france1@atlanticif.com
qt.nordic1@atlanticif.com
qt.japan@aifcompany.com
qt.usa@allstateif.com

FOR KOREA CUSTOMER

qt.germany@atlanticif.com
qt.italy@atlanticif.com
qt.france@atlanticif.com
qt.nordic@atlanticif.com
qt.japan@aifcompany.com
qt.usa@allstateif.com

2.

Perishable & Pharma with A.I.F.

In 2016, A.I.F. Italy obtained the HACCP certification for food and started the process for GDP and CEIV compliance for pharma products.

Including this certification process we decided to invest in the enlargement of this cool rooms capacity with the build-up of a last generation cooling system which is available as from 2017 in our warehouse. Specially, we have pre-cooling zone where can be unloaded cargo from trucks under temperature control (+12 °C) for a safety. Also we can provide professional re-packing services for perishable shipments as per customer request.



3.

LCL Reefer Container Consolidation Service

As an alternative to air freight, we offer innovative LCL Reefer solutions for your conditioned good.

The strong points of this service is a possibility to send by seafreight smaller quantities of goods, saving money, because a small quantity would not justify the cost of a full container, neither the cost of air freight forwarding.

This service has been studied and planned for the food industry, for food & drinks with long term shelf life but which need to be kept at controlled temperature.

Our LCL Reefer service is surely more convenient in terms of cost than airfreight forwarding, however in case of urgent shipments, we can arrange for temperature controlled airfreight for perishable cargo on daily departures basis. Safety, professionalism and punctuality are our main characteristics.

4.

Handling Expertise for Oversized Shipments



Customized High Quality Service

5. Image Report Service

We always want to ensure peace-of-mind which is why we developed the Image Report Service. Whether its FAK consolidated shipment or any other shipping method, we start by checking each piece of cargo to make sure its in the proper condition for shipping. As we stuff containers, we photograph each step of the process to protect our customer's valuable cargo.



UNLOADING AT CFS



STUFFING CONTAINER



6. e-Newsletter

We collect all relevant information, from logistics industry updates to natural disasters to the latest in congestion from our global branches to provide up-to-date news in our Newsletter.



- Hot Issue of logistics worldwide
- GRI Increases
- Surcharge updates for cargo bound for China
- Holidays of the various branches

7. Palletization for Air

Palletization is at the core of our air freight service as it helps ensure the safe transport of valuable cargo.

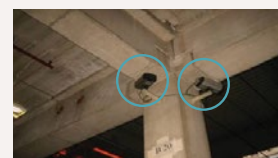
To help protect cargo from unforeseen circumstances, we protect the corners with a firm cardboard to withstand force and avoid being crushed. We finish palletization by wrapping with shrink wrap to keep loose cartons together and avoid damage in transit.



8. Security Focused for Increased Peace of Mind

Surveillance System

Our warehouses are equipped with state-of-the-art security including cameras and an alarm system, offering 24 hour surveillance to assure the safety of our customers' cargo. Our staff are trained to securely and professionally handle all types of valuable goods including electronics, textiles and apparel.



Secure Cargo Check

Our warehouse professionals check and scrutinize the status of each item after unloading in our warehouse. When we find that the cargo is opened or damaged, it is immediately weighed and the contents are compared to the packing list while being supervised by a third party to ensure safety and security. Every detail of this process is documented and recorded, then a full report is sent to the customer.

